



Eastern West Virginia Community Foundation · Hampshire County Community Foundation · Hardy County Community Foundation

Gather. Grow. Grant.

2009 Report to the Community

Legacies at Work

**Please get in
touch with
us today**

Legacies



Eastern West Virginia Community Foundation

229 East Martin Street, Suite 4
Martinsburg, WV 25401
(304) 264-0353
(888) 507-8375 toll-free fax
www.ewvcf.org · info@ewvcf.org
Serving Jefferson, Berkeley, and Morgan Counties



Hampshire County Community Foundation

PO Box 40
Romney, WV 26757
(304) 822-7200
(888) 507-8375 toll-free fax
www.hampshireccf.org · info@hampshireccf.org
Serving Hampshire County



Hardy County Community Foundation

PO Box 1058
Moorefield, WV 26836
(304) 538-3431
(888) 507-8375 toll-free fax
www.hardycountycf.org · info@hardycountycf.org
Serving Hardy County

<i>Financial Summary 2009</i>	2
<i>Become a Legacy Philanthropist</i>	4
<i>Roadmap for Donor Advised Funds</i>	6
<i>Legacy Endowment Funds</i>	8
<i>Legacy Society</i>	16
<i>Legacy Philanthropists 2009</i>	17
<i>Grants Awarded 2009</i>	26
<i>Scholarships Awarded 2009</i>	30
<i>Applying for a Grant or Scholarship</i>	32

at Work

Dear Friends,

The Board, Volunteers, and Staff of the Community Foundation are pleased with the notable growth of your community endowment during 2009. Our financial report beginning on page two provides the details.

The numbers are only a fraction of the story, however. The following pages of our "Report to the Community" represent heartbreaking, motivational, selfless, and meaningful stories that inspired our 126 endowment funds established to honor and cherish people in our lives and causes that make a difference to us. These pages list hundreds of caring community members and corporate citizens who have given something permanent to us all. Endowment.

And, not just any endowment—community endowment. Each fund in the Community Foundation is like a collective inheritance... a community birthright... a permanent legacy. That means that our community has an everlasting resource that will ease the way for many, and improve the quality of life for us all.

Our job at the Community Foundation is to serve as stewards of those legacies, forever. As we gather your gifts, grow our community endowment, and grant to students and charities, we put these legacies to work.

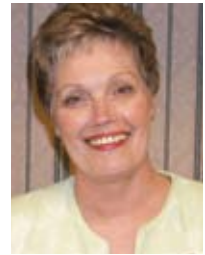
**Our work is your vision. Our work is your story.
Thank you, always, for sharing it with your community in
such a remarkable, generous, and everlasting way.**



STEW BORGER
President,
Eastern West Virginia
Community Foundation



CINDY JOHNSON
Chair,
Hampshire County
Community Foundation



TOM WIDDER
Chair,
Hardy County
Community Foundation



AMY OWEN
Executive Director



OUR MISSION is to improve the quality of life for all people in Eastern West Virginia. The Community Foundation embraces the concept that people working together can make a difference. We seek a common philosophy whereby people recognize, understand, and act upon the benefits philanthropy brings to our community. We build permanent endowment. We offer maximum flexibility to our donors, meet high professional standards, promote effective and efficient grantmaking, and strengthen charitable organizations in our community.

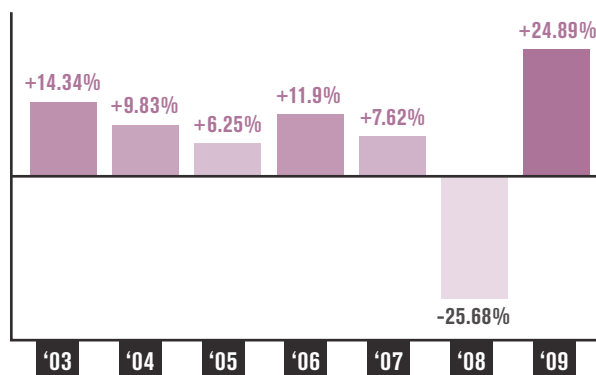
Financial Report

Donors who establish funds in the Community Foundation enjoy two financial benefits: the superior tax savings available when giving to a community foundation and the cost efficiencies achieved by collective endowment investing and management.

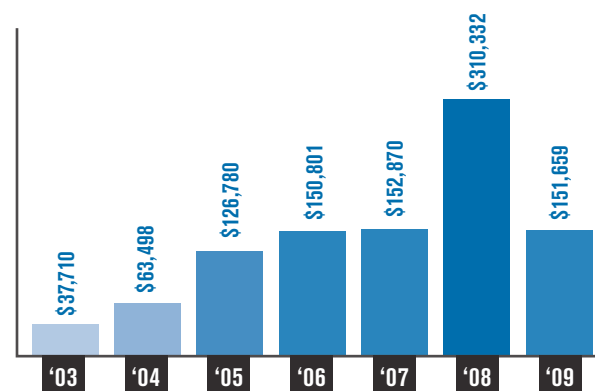
1%

For 2009, the Community Foundation continued its longstanding record of holding steady its **1%** administrative fees applied to each fund's value. In addition, our six investment advisors (BCT, First United Bank, BB&T, United Bank, City National Bank, and CNB Bank) offer extraordinary savings with a .35% investment fee. Both modest fees make for an exceptionally low overhead ratio.

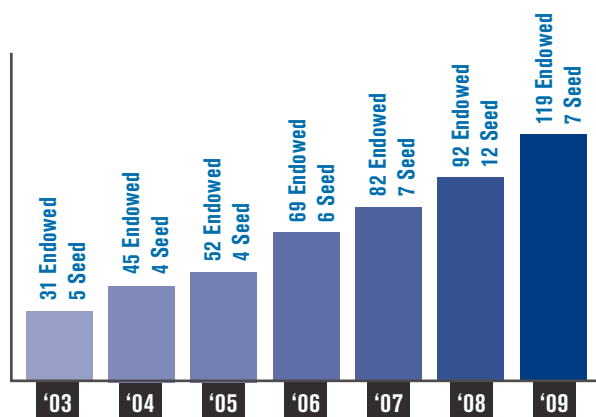
INVESTMENT RATE OF RETURN



TOTAL GRANTS AND SCHOLARSHIPS



NUMBER OF FUNDS



ASSETS



ASSETS

Cash and Cash Equivalents	\$386,552
Investments	6,507,302
Beneficial Split-Interests and other Bequests	2,464,657
Other	27,885
TOTAL ASSETS	\$9,386,396

REVENUES

Contributions and Events	\$2,351,173
Investment Income	147,083
Gains and Miscellaneous	12,099
TOTAL REVENUES	\$2,510,355

GRANTS AND EXPENSES

Grants & Scholarships for Charitable Purposes	\$151,659
Operating Expenses	262,296
In-Kind Donated Operating Expenses	22,471
TOTAL GRANTS AND EXPENSES	\$436,426
NET UNREALIZED AND REALIZED GAINS	\$900,349
SPLIT-INTEREST GIFTS ACTURAL ADJUSTMENT	\$100,582
CHANGE IN NET ASSETS	\$3,074,860
NET ASSETS AT BEGINNING OF YEAR	\$5,415,392
NET ASSETS AT END OF YEAR	\$8,490,252

ENDOWMENT FUNDS BY TYPE

SEED FUNDS & UNRESTRICTED FUNDS NOT DESIGNATED	\$1,585,285
UNRESTRICTED GENERAL ENDOWMENT	\$26,094
COMMUNITY ENDOWMENT	\$487,222
SCHOLARSHIP ENDOWMENT	\$819,046
AGENCY ENDOWMENT	\$811,658
DESIGNATED ENDOWMENT	\$1,164,632
FIELD-OF-INTEREST ENDOWMENT	\$2,054,680
DONOR ADVISED ENDOWMENT	\$1,272,414

2009 Summary Financial Statement

The Eastern West Virginia Community Foundation's auditor, Yount Hyde & Barbour, PC has issued an unqualified opinion on the financial statements ended December 31, 2009.

Completed 2009 audited financial statements may be found on our Web site, EWVCF.org and are available upon request.

*Gather. Grow.
Grant.*

Here are the basic steps for creating a fund

By creating a fund in your Community Foundation serving Hardy County, Hampshire County, or the Eastern Panhandle, you can take advantage of all we have to offer.

The Community Foundation makes it economical and easy for you to invest in the community. Donors get prudent fund management and the generous tax advantages associated with giving through a community foundation. You also benefit from a committed staff with knowledge of the community and the charities in our area.

We take care of administrative functions, evaluate charities, and stay in tune with the changing community to support you and help you achieve your charitable vision.

Newly established funds can be created with a lump-sum gift of \$5,000 or more. Many of our philanthropists start by creating a Seed Fund, building toward a fully endowed over five years with an initial gift of \$500 or more.

1 Define your charitable and financial objectives. Consider how you want your gift to be used, whether you want future family members involved, and how much involvement you want in making grant recommendations.

2 Select the type of fund that matches your charitable interests.

GENERAL FUND A gift to establish a General Fund helps meet the changing needs of your community, now and in the future. General Funds broadly support the wellbeing and vitality of Eastern West Virginia and its residents and are distributed to qualified charities seeking support through the Community Foundation's grantmaking program.

When you establish a General Fund, you leave decisions about the use of your gift to the Community Foundation, trusting the Foundation's knowledge and reach within the community to determine what needs are most pressing.

AREA OF INTEREST FUND This type of fund allows you to target an area of need rather than a specific charity. The Community Foundation will make grants to those organizations most effectively serving the people and causes you want to help—the elderly, homeless, hungry, arts and cultural organizations, education, environment, for example. You define the area of interest.

DONOR ADVISED FUND A donor-advised fund allows you to enjoy ongoing involvement in the distribution of your gifts from your fund. You bring specific grant recommendations to the Community Foundation for consideration.

DESIGNATED FUND You may name a specific charity to benefit from your gift. Should this designated organization cease to exist, the Community Foundation has the authority and responsibility to reallocate grants to another agency that most closely reflects your original vision.

AGENCY FUND Charities often wish to create long-term endowments that will benefit their mission and purpose. The Community Foundation provides an excellent vehicle to ensure endowment gifts are carefully invested and managed.

SCHOLARSHIP FUND You may choose to dedicate a fund's purpose entirely to helping students study and advance their education. The Community Foundation works with area school staff, community volunteers, and our Board of Directors to interview students and make award recommendations.

3 Determine which asset you will use in creating your fund. Gifts of cash, securities (publicly traded or closely held) or real estate can be accepted by the Community Foundation to set up a fund. Assets with a low cost basis are often wise choices, since they offer maximum tax advantages: You pay no capital gains tax and receive a favorable income-tax deduction. You may also wish to review assets inside your retirement plan for possible charitable use. At all times, we work closely with your accountant and attorney to ensure your charitable wishes are clearly understood and applied.

4 Choose a name for your fund. Many donors choose a family name, but you can use any name that is meaningful to you.

5 Make your gift to the Community Foundation. While your gifts to establish a fund will be commingled with other Community Foundation assets for maximal investment benefits, income and appreciation are tracked and tied to your fund, benefitting your fund for its growth and charitable grantmaking.

6 Plan a gift through your Will. Appropriate language to make sure your Will meets legal and tax criteria is available. Just ask!

From here on, your charitable vision is nearly worry-free. The Community Foundation takes care of government filings, grant paperwork, auditing and accounting. Most importantly, you will have joined with dozens of others who have created a personal legacy that is true philanthropy.

To get started, contact the **Eastern West Virginia Community Foundation** at (304) 264-0353 or via email at info@EWVCF.org; **Hampshire County Community Foundation** at (304) 822-7200 or via email at info@HampshireCCF.org; or **Hardy County Community Foundation** at (304) 538-3431 or via email at info@HardyCCF.org.

Transferring a Private Foundation or Trust Fund. Existing private foundations or charitable trust funds can be easily transferred to a named endowment fund within the Community Foundation, greatly reducing administrative overhead, while maintaining key elements of donor involvement and long-term, legacy vision. The disadvantages of private foundations or trusts—excise fees, administrative fees, lesser tax benefits, and due diligence administration—cause many to seek a more flexible alternative in the Community Foundation.

Corporate Giving Funds. Corporations are often overwhelmed with requests for charitable gifts. Many corporations across America look to their local community foundation for a simplified, focused giving program, administered by Community Foundation staff. A corporation can establish a named fund and set up specific guidelines for grant making. Or, it may elect to give the Community Foundation full discretion over disbursements.

Gather. Give.

INTERESTED IN CREATING A DONOR-ADVISED FUND? HERE ARE SOME FREQUENTLY ASKED QUESTIONS...

CAN I MAKE A GRANT OUTSIDE OF EASTERN WEST VIRGINIA?

Yes. Please be sure to give us ample time to perform due diligence on charities new to the Community Foundation.

CAN I GIVE TO MY CHURCH OR CHILDREN'S SCHOOL?

Yes. Places of worship and education institutions are charitable. So are grants that lessen the burden of government through poverty abatement and community improvement.

CAN I RECOMMEND GRANTS AND BE ANONYMOUS TO THE PUBLIC?

Yes. The Community Foundation will protect the anonymity of its donors. Please be sure to let us know of your wishes.

CAN I RECOMMEND GRANTS IN MEMORY OR IN HONOR OF SOMEONE?

Yes. Include this information with your grant recommendation.

CAN I MAKE A GRANT TO A CHARITY WHOSE BOARD ON WHICH I SERVE?

Yes, as long as you do not pledge such a grant or receive personal benefit from the grant.

CAN I FULFILL A PLEDGE TO GIVE TO A CHARITY?

No. Memberships, pledges, sponsorships, tickets as well as gifts that provide a personal benefit to you or your family cannot be made.

CAN I RECOMMEND MULTI-YEAR GRANTS?

Yes. The Community Foundation will consider such requests. But, don't overextend your fund's resources.

CAN STAFF HELP ME WITH IDEAS AND RESEARCH ON AREA CHARITIES?

Yes. Our day-to-day work includes helping you learn as much as you wish about our community and its charities. We can help you in a number of ways. Please call us.

WHEN AND HOW MUCH CAN I ADD TO MY DONOR ADVISED FUND?

Unless your fund is set up otherwise, you or anyone may add any amount at any time, including gifts of stock, real estate, insurance, and other forms of giving.

MAY I RECOMMEND GRANTS FROM BOTH INCOME AND PRINCIPAL OF MY FUND?

As long as your fund agreement does not expressly prohibit expenditure of principal, you may make grants from both.

IS THERE A LIMIT TO HOW MANY GRANTS I CAN RECOMMEND IN A YEAR?

No. However, a minimum grant of \$100 is suggested.

A DONOR ADVISED FUND

VS.

A PRIVATE FOUNDATION

To learn more about how the Community Foundation can work for you and your charitable vision, call your Community Foundation today.

	ESTABLISH ADVISED FUND WITHIN THE COMMUNITY FOUNDATION	CREATE A NEW PRIVATE OR CORPORATE FOUNDATION
Organization	Established	Not established
Tax Exempt	501 (c) (3)	Not established
Funds Required	Build up to \$5,000	Experts recommend at least \$1 million
Donor's Role in Selecting Grants	Donor, family, his/her committee recommends grants	Donor specifies grants
Tax Deductibility	Maximum	Limited
Cash Gifts	Deduct 50% AGI	30% AGI
Long Term Appreciated Securities	Deduct 30% AGI	20% AGI
Federal Approvals/Restrictions	No payout requirement. No federal excise taxes.	Requires 5% payout annually. 1% or 2% excise tax. Greater incidence of field audits. Must prepare tax return.
Language for Making Gifts and Creation of Funds	In Place	Must Create
Office/Staff/Accounting	In Place	May need to obtain
Officer Liability	Covered	May need to obtain
Investment of Assets	Oversight Committee	Need to obtain
Overhead Costs	Up to 1.5%—covers everything	Substantial costs

2009 LEGACY ENDOWMENT FUNDS

GRANTMAKING AND SCHOLARSHIP FUNDS

The Community Foundation provides stewardship for the following endowed funds. Their purposes differ, but all share the primary focus of improving the quality of life in Eastern West Virginia.



Margaret Allen Memorial Fund 2009

This designated fund supports the Hardy County Public Library to support its operations and programs and was founded by Betty Baker, named the 2009 Spirit of Hardy County.



Austin Family Fund 2007

Honored as a 2007 Spirit of the Panhandle awardee by the Eastern West Virginia Community Foundation and First United Bank, Bonnie Austin created a donor-advised fund to benefit the tri-county community.

Berkeley County Industrial Park Development Fund 2009

This donor-advised fund supports economic development, workforce development, business recruitment and creation, job creation, and employability training initiatives. A now terminated Berkeley County Industrial Park Development board created the fund as all lands in its jurisdiction were completed and developed.

Berkeley County Reads Fund 2006

This fund will help fund construction of new library facilities in Berkeley County and eventually provide support for maintenance and upkeep for library facilities in the county.

Berkeley County Teachers' Scholarship Fund 1996

Corning Glass Works and the Corning Foundation founded this fund to help send Vicky Bullett's family to the 1992 Summer Olympics where Ms. Bullett won a gold medal playing with the U.S. basketball team. Surplus gifts started this permanent endowment to benefit college-bound teachers.

Boehm Family Fund 2005

The Boehm's created their own donor-advised fund to support charitable efforts in and around the Eastern Panhandle.



BOYS & GIRLS CLUB
OF THE EASTERN PANHANDLE

Boys and Girls Club of the Eastern Panhandle Fund 2006

Launched by Richard Durham, this fund provides general support to this group that offers safe-haven, programs, clubs, recreation, and activities to so many area youth.



Boys and Girls Club of Morgan County Gail A. Shade Fund 2004

This fund supports the Boys and Girls Club of the Eastern Panhandle and its Morgan County facility in honor of the 2004 Spirit of the Panhandle volunteer Gail Shade who helped to create the club. CNB Bank, Inc. donated funding to establish this endowment.



Big Brothers Big Sisters
of the Eastern Panhandle

Big Brothers Big Sisters of the Eastern Panhandle Fund 2003

Multiple donors helped to begin this endowment fund—Don Owen, Andrew Michael, Robert Strauch, and Joanna

Abbruzzese—to benefit this organization that matches high-risk and at-need children with volunteering adults, or “Bigs,” who spend time to build long-term relationships with their “Little.”

Deborah, Leslie, and Christopher Bright Achievement Fund 2007

Created by Dr. Harold and Mrs. Janice Bright, this scholarship fund, named for their children, provides scholarship grants to talented science and music students from Morgan and Hampshire Counties as they participate in scientific research programs or private and conservatory music lessons.

CCAP Loaves and Fishes Fund 2008

Generously founded by Trinity United Methodist Church, this fund provides annual support to this core health and human service organization serving Berkeley County residents in rent assistance, financial management, and general aid.



CASA of the Eastern Panhandle Fund 2007

This charity serving abused and neglected children in the tri-county will forever benefit from the generosity of Tari Hampe-

Deneen, 2007 Spirit of the Panhandle honoree, with this permanent endowment made possible by CNB Bank, Inc.



Camp Frame 4-H Fund 2007

Many individuals and families have helped to support Camp Frame

in Berkeley County for years. The 4-H Board transferred assets to Eastern West Virginia Community Foundation to further build their endowment providing perpetual funding for the camp and the generations of 4-H participants learning more about leadership, citizenship, and life skills.



City National Bank Charitable Fund 2008

With a remarkable gift from the Bank, City National Bank created a donor-advised fund to allow for local grantmaking in the tri-county area.



Walter and Mary Jo Ziler Brown Fund 2006

This scholarship fund helps Eastern Panhandle students to study animal husbandry,

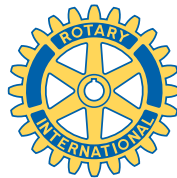
agriculture, attend veterinary school, or become a vet tech.



Linda Case and John Rayburn Family Fund 2004

This donor-advised fund supports charitable programs that address conservation, environmental stewardship, historic preservation,

and human welfare programs, as well as the long-term vision of the Jefferson County based Craftworks, Inc.



Charles Town Rotary J.B. Smith Memorial Fund 2003

Set up in memory of Harpers Ferry's J.B. Smith who was killed in an automobile accident in 1998 at age 23,

this fund was established by the Charles Town Rotary to benefit Jefferson Memorial Park, public high-school baseball athletics in Jefferson County, and the Eastern Panhandle Free Clinic.



Anna Jo Crosby Scholarship Fund 2003

Anna Jo Crosby's friends, family, and husband created this tribute in her memory. Scholarships support Morgan County high school graduates

pursuing a degree in biology or veterinary medicine.



Diane M. and James W. Dailey II Fund 2006

This donor-advised fund provides grants to area charities that serve poverty-

based populations, educational programs, and economic development.



Derflinger Earth Sciences Scholarship Fund 2006

This fund, created by Jerry Derflinger, provides scholarships for Berkeley County students with financial need attending

a West Virginia college or university to study agriculture, forestry, geology, archeology, or environmental science.



Polly Dillon Scholarship Fund 1998

Mary Coe Dillon, a retired school teacher, invested her professional career in educating Berkeley County children.

Her fund is dedicated to providing scholarships to Hedgesville High School graduates interested in pursuing a four-year degree in agriculture or related natural sciences.

Mary and Walter Duke Teachers Scholarship Fund 2007

In creating this scholarship, Walter and Mary Duke were inspired by the generosity and fond memory of Francis and Virginia (Hon) Frye, business owners and civic leaders in Jefferson County, who nurtured and mentored Mary Duke as she began her teaching career. Since Walter and Mary both dedicated many years of their lives to teaching, they designed their fund to support future generations of Shepherd University students seeking a degree in teaching.



Eastern Panhandle Free Clinic Fund 2005

Created in honor of Katharine Costea, named 2005 Spirit of the Panhandle. She selected the Eastern Panhandle Free Clinic as her endowment

beneficiary to support its commitment to serving those in need with medical care. The fund was sponsored by Bank of Charles Town.



Eastern Panhandle Young Life Endowment Fund 2006

This designated fund will forever benefit the local chapter of Young Life, a program dedicated to reaching out to school-aged youth with faith-based gatherings, activities, and programs.



Eastern Panhandle WVU Alumni Association Scholarship Fund 2004

This fund provides future scholarships to attend West Virginia University for graduates of Jefferson, Berkeley, or Morgan County high schools who are children, stepchildren, or grandchildren of WVU alumni.



Eastern West Virginia Community Foundation Administrative Endowment Fund 2004

Founded and funded by Community Foundation former Presidents Doug Roach, Tia McMillan, and Diane Dailey, distributions offset the annual operating expenses of the Community Foundation—our own endowment for the future.



E.D. Fund Seed Fund

Launched by Amy Owen, the Eastern WV Community Foundation's first paid staff, this fund is donor advised by the currently employed executive director (E.D.) to benefit Eastern

Panhandle programs and charities.



Endowment for the Arts 1997

The Shepherdstown Rotary Club helped to seed this fund with a gift to benefit an area orchestra no longer in operation. Grants from the Fund support Panhandle arts and cultural programs.

Endowment for the Community 2002

The Eastern West Virginia Community Foundation's Board of Directors established this fund to meet the many changing needs of our community. Such Board directed grantmaking is an all-important resource for the Eastern West Virginia Community Foundation and its mission to improve the quality of life for all people in Eastern West Virginia.

Endowment for Recreation 1997

Created with collective gifts from the tri-county supporters, this field-of-interest fund supports recreational programs in Jefferson, Berkeley, and Morgan Counties.

Endowment for Special Needs 2004

Founded originally by the former Eastern Panhandle Training Center, this fund supports the Hedgesville based Groves Center that provides training and occupational involvement for special needs adults.



First Presbyterian Church Angel Fund 2007

Created by a charter Board member of Eastern West Virginia Community Foundation, Phil Seibert, this fund allows the leaders of its congregation to help individuals and families in need in our community who suffer from catastrophe and unexpected events.



Frada Fine Berkeley Education Fund 2006

Launched with the support of BB&T Wealth Management, this fund provides resources to Berkeley County public schools and their educational programs and initiatives.



Solomon Fine Fund 2005

Created through a bequest and in cooperation with BB&T Wealth Management, this community fund provides an annual grant to charitable, religious, or civic organizations in Martinsburg or Berkeley County as a special commendation for outstanding work and leadership for the betterment of citizens in the area.

Fischer Family Fund 1999

This scholarship fund was established by Dr. Frank H. Fischer to provide scholarships to eligible recipients pursuing an associate degree in business or accounting.

Friends of Senior Life Services of Morgan County Endowment Fund 2009

Created with assistance from the 2009 Eastern WV Community Foundation Charity Challenge grant and matching Senior Life Services donors, this fund benefits the Berkeley Springs based group.

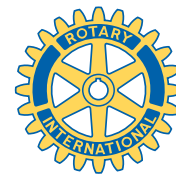


Frances Frye and June Orndorff Fund 2008

Hardy County's Virginia Vance, named the 2008 Spirit of Hardy County, named this fund to memorialize two friends who volunteered countless hours to build and maintain the J. Allen Hawkins Park in Wardensville, WV. The fund is a field-of-interest fund supporting public parks in the Town of Wardensville.

Red Funkhouser Town Park Fund 2009

Created by the Town of Wardensville, this fund benefits and offset costs associated with operations and maintenance of J. Allen Hawkins Community Park, Wardensville, WV.



Dr. N. Blaine Groves/Rotary Scholarship Fund 2001

The Martinsburg Rotary Club created this scholarship fund in memory of Dr. N. Blaine Groves to benefit Berkeley County high-school graduates.



Glenna Merica Grove Fund Seed Fund

This namesake fund involves family members serving as the donor advisors to future grant recipients in the tri-county area.



Habitat for Humanity Endowment Fund 2005

Launched by C. David and Barbara L. Miller, this fund provides annual general operating support for this tri-county organization that brings together community resources to build housing for those in need.



Hampshire County Community Endowment 2006

Founded by the charter Board of Directors for the Hampshire County Community Foundation, this fund helps to meet changing charitable needs in Hampshire County.

Hampshire Volunteer Emergency Medical Services Fund 2009

Created by dozens of donors and with the work of EMT's around Hampshire County, this field-of-interest fund supports emergency medical technician training and programs.



George W. and Holly Woods Hancock Memorial Fund—Mt. Zion Methodist Church Fund 1995

Mr. Hancock honored his wife's memory and their faith by creating this organizational endowment fund to benefit Martinsburg's Mt. Zion Methodist Church



George W. and Holly Woods Hancock Scholarship Fund 1995

George Hancock became the **charter donor** of the Eastern West Virginia Community Foundation when he established this fund. Mr. Hancock directed YMCA organizations around the nation for 43 years. His wife taught kindergarten. Their work inspired this fund that provides higher education scholarships to African American students graduating from Berkeley County high schools.



Hardy County Community Endowment 2008

Grants for a variety of needs and programs specific to Hardy County are served through this fund.



Hardy County Founding Fund 2009

Created with a Legacy Bequest by Ruth Heishman, this donor-advised fund supports the establishment and continuation of the Hardy County Community Foundation as well as public-school educational programs serving east Hardy County.



David A. "Hawk" Hawkens Scholarship Fund 2003

Created by friends and family of USAF Captain David Hawkens, this fund serves as a memorial to his life. College-bound students from

Jefferson, Berkeley, Morgan, and Hampshire Counties based on financial need are eligible.



Robert L. Hawvermale Sr. Saint Mark's Episcopal Church Camp Fund 2009

Created by the Trustees of St.

Mark's Church and with the generosity of the Hawvermale family, this fund supports youth attending Peterkin Camp of Romney, WV, or a similar camp program.

Home Hill Charitable Fund 2003

This donor-advised fund, created by Margaret Drennen and overseen by the governing board operating the Home Hill Corporation, supports a broad range of charitable programs in Jefferson County and the Eastern Panhandle.

Healthy Smiles Dental Health Fund 2007

Created by Dean and Betty Russell—and added to by dozens of friends and caring citizens in the community—this fund will help to address the dental health needs of our community, including some 10,000 Medicaid children needing dental service in the tri-county area.



House Action Fund 2005

Launched by Dan Ryan Builders, this fund aids charities that address housing aids homelessness conditions in Jefferson, Berkeley, and Morgan Counties.



Hospice of the Panhandle Endowment Fund 2000

This agency endowment fund was created by Hospice of the Panhandle. Earnings help offset Hospice expenses throughout the community as they fulfill their mission to provide resources for care providers, patients, and families.



Jefferson County 4-H Foundation Fund 2008

This fund benefits the annual programs and initiatives of the Jefferson County 4-H program. A remarkable listing of legacy supporters helped to create the endowment fund.

Bank of Charles Town Fund
Bardane Community Center Fund
F. Kenneth and Gay F. Barron Fund
John "J.P." and Donna Burns Fund
Edgar Drew Conklyn Catrow and Ida Albin Conkly Fund
Mrs. "Lulu" Jack Catrow Fund
Charles Town Lions Club
Charles Town Moose Lodge No. 948 Fund
F&M Bank WV (BB&T) Fund
Robert A. and Pauline S. Hockensmith Fund
Mary Frances Hockman Fund
Margaret "Sugie" Jamison Memorial Fund
Jefferson County 4-H Leaders Fund
Jefferson County CEOs Fund
Jefferson County Fair Fund
Jefferson County Farm Bureau Fund
Jefferson Security Bank Fund
Dr. Dale Keyser Fund
W. H. Knode's Sons
Marian Myers Fund
South Jefferson Ruritan Fund
Robert W. and Rubye C. McCormick Memorial Fund
D.L. and Tara Morgan Family Scholarship Fund
Annabelle and Charles W. Osbourn Fund
J. Edward and Louise Saville Fund
Robert R. and Mary Rogers Smith Fund
James W. and Mary B. Staley Fund
George E. Tabb, Sr. and Dorothy Tabb Memorial Fund
Lyle C. Tabb Memorial Fund
Cynthia Kay Russell Fund
William E. "Pete" Walker Fund

Jefferson County 4-H Endowment Supporters

Jefferson County Schools Education Foundation Fund 2006

This fund provides funding for the support, continuation, and advancement of public education K-12 programs in Jefferson County, as guided by the Jefferson County Schools Education Foundation.

Karos Family Fund 2006

This scholarship fund, created by George Karos, helps Berkeley County students who intend to become pharmacists.



James E. Keel Jefferson County Community Ministries Fund 2008

This fund provides a perpetual funding source for the Jefferson County Community Ministry, serving those in need with clothing, a food pantry, and other aid.



Martin Luther King Scholarship Fund 2000

To honor the memory of one of the nation's great leaders, the Martin Luther King Scholarship Committee established this fund to distribute scholarships to graduating seniors

from Jefferson, Berkeley, and Morgan counties in perpetuity.

Martinsburg 200th Anniversary Scholarship Fund 1996

Berkeley County high-school graduates seeking a four-year degree are eligible for scholarships from this fund, established with surplus funds from the celebration of the 200th anniversary of the founding of Martinsburg.



Martinsburg-Berkeley County War Memorial Park Fund 2005

A favorite community park in the heart of Martinsburg, distributions from this fund aid in restoration and up-keep of facilities and provide programs for the thousands who love and enjoy War Memorial Park.



Martinsburg High School Class of 1964 Fund 2009

Created with gifts from dozens of Class of '64 graduates, this fund provides scholarships for future graduates of Martinsburg High School attending a West Virginia higher education institution.



McMillan Family Fund 2000

This donor-advised fund allows the McMillan family to recommend grants to benefit charities of family interest.



Wilda Michael Memorial Scholarship Fund 2003

The family of Wilda Michael established this fund to honor her memory. The fund benefits Hampshire County high school graduates pursuing continuing education.



Arthur L. Miller Fund 2006

Created by bequest, Arthur Miller designated his fund to provide annual grants to benefit Berkeley County Senior Services.



Robert W. and Gina M. Miller Fund Seed Fund

This donor-advised fund will provide new funding to tri-county charities.



Millers Electric Scholarship Fund 2007

Berkeley County students at James Rumsey Technical Institute ready to study Electrical/Electromechanical Technology, Heating/Ventilation/Air Conditioning & Refrigeration, or Culinary Arts will benefit from this fund created by this family owned business.



Ginie Molnar Fund for Special Athletes 2004

Created by BB&T Wealth Management in honor of 2004 Spirit of the Panhandle volunteer Ginie Molnar, this fund provides annual support to Special Olympians in Berkeley County.

Morgan County Youth Fund 2005

Founded by Tom and Virginia Seely, this fund aids sick, needy, dependent, neglected and disadvantaged children in Morgan County, and provides support for their athletic, social, civic, and community activities so important to a good life.



Mountain Heart Foundation Fund 2005

Mountain Heart Foundation operates a summer camp for children with heart conditions. This fund provides scholarships for children from the Eastern Panhandle to attend this special West Virginia camp.



Ron Nordeen/Good Shepherd Interfaith Volunteer Caregivers Fund 1999

Founded in honor of Ron Nordeen, this fund provides an endowment for the Good Shepherd Interfaith Volunteer Caregivers, which provides caregiving and support for elderly, homebound, and needy citizens in Jefferson County. A gift from Conrad C. Hammann, Sr., first "seeded" the fund in 1997.



Old Opera House Theatre Endowment 2009

Created with assistance from the 2009 Eastern WV Community Foundation Charity Challenge grant and matching Old Opera House donors, this fund benefits the Charles Town based community theatre.

Gather Grow
Grant

Overington Scholarship Fund 2009

Home-schooled students as well as those attending faith-based area schools benefit from this scholarship fund, created by John and JoAnn Overington.



Erin Michele Pancake Memorial Fund 2009

In memorial to Erin, this donor-advised fund supports charitable organizations promoting positive youth development and substance abuse prevention and education in Hampshire County.



Panhandle Home Health Endowment Fund 2003

Panhandle Home Health's Board of Directors created this fund as a permanent organizational endowment. Distributions from the fund will help offset annual expenses as Panhandle Home Health fulfills its mission to provide quality health care services in the comfort of patients' homes.



Patient Care of Hospice Fund 2007

With funds made possible by BB&T Wealth Management and through the charitable vision of 2007 Spirit of the Panhandle honoree Betty Jo Stout, this fund will help the financially in-need patients under the care of Hospice of the Panhandle.

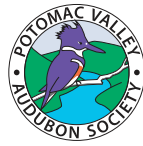
Roger and Wanda Perry Fund 2005

The Perrys recommend grants for charitable programs and activities in Jefferson County through this donor-advised fund.



Bonn Poland Family Roundhouse Recreation Fund 1998

This fund was established by Bonn "Buzz" Poland based on his interest to include youth programs and recreational opportunities within the renovation of the Baltimore and Ohio Roundhouse in Martinsburg.



Potomac Valley Audubon Society Fund 2004

Founded in honor of 2004 Spirit of the Panhandle Volunteer Jean Neely and endowed by the Bank of Charles Town, this fund provides annual support for the Potomac Audubon Society and its Yankauer Nature Preserve.



Reliving History Fund Seed Fund

This fund supports programs that enrich and support the restoration, preservation, and interpretation of historic sites with significant relevance between years 1750-1800 in the Eastern Panhandle, such as the Peter Burr House (the oldest wood frame structure in West Virginia) Kearneysville, WV.

Steven M. and Tina F. Roach Camp and Mission Fund 2009

This designated fund benefits youth attending camps and/or mission trips in the U.S or abroad. The fund works with Young Life, St. Luke's United Methodist Church, and Otterbein United Methodist Church to identify interested youth.



Rosabell and James Roman Fund 2009

Rosabell Roman was honored as a 2009 Spirit of the Panhandle. She designated her fund to benefit her church, Mount Zion United Methodist Church, Martinsburg.



Robert Rentschler Memorial Fund Seed Fund

Students from Warm Springs Intermediate School, Berkeley Springs, who have shown substantive and recognized positive change in behavior including in academics, social interaction, and intrapersonal behaviors will benefit from a U.S. savings bond as a result of this fund to memorialize a former principal of the school and leader in education in West Virginia.



Myrtle Schneiderhan Fund 2008

This legacy fund supports the programs and services provided by Trinity Church, Martinsburg.



Ernie Schrider and Friends Fund 2009

Named a 2009 Spirit of the Panhandle, Ernie Schrider designated his fund to equally benefit Morgan County Starting Points and the American Cancer Society.



Betty L. Severson Good Shepherd Interfaith Volunteer Caregivers Fund 2009

Named a 2009 Spirit of the Panhandle honoree, Betty Severson shaped her fund to benefit Good Shepherd Interfaith Volunteer Caregivers of Shepherdstown.



Desiree' Shields Fund 2007

Created in memory of Desiree Shields who died in an automobile accident, her legacy fund is donor advised by her mother.



Slanesville Presbyterian Angel Fund 2007

Families suffering from fire, medical catastrophe, and other unexpected hardships will receive some relief from this fund dedicated to Hampshire County.



Steeley Memorial Scholarship Fund 2007

Roy and Gwen Steeley's fund provides scholarships for Jefferson or Berkeley County graduates pursuing a teaching degree from a West Virginia college or university.

Two Rivers Giving Circle 2008

Created by a group of area donors, this Fund enjoys the flexibility of the Community Foundation by both building endowment and providing "pass-through" grants to benefit area programs and charities that focus on historic preservation and area conservation. Donors who make gifts of predetermined amounts (set by the group) serve as donor-advisors for grantmaking recommendations.



Tom and Virginia Seely Childrens' Fund 2007

Tom and Virginia Seely known for their long-time philanthropy to support, promote, aid, and education youth, set up this field-of-interest fund to support such programs in Morgan County.

William Brady and Jean Taylor Rannells Fund 2006



Distributions from this fund, founded to honor the donor's parents who met, lived, loved, and raised a family in Hampshire

County, will benefit youth and health programs in that county.

Joan Roach Volunteer Fund for the Needy 1999

Friends, colleagues, and family members of Joan Roach established this donor-advised fund to honor her outstanding and ongoing volunteer work. The fund benefits tri-county faith-based programs for sick, needy, dependent, neglected or disadvantaged people.

Scott and Linda Roach Fund 2004

This family oriented, donor-advised fund serves low-income and poverty based children in need throughout the Panhandle.



Robert A. Sanders Fund 2005

Created in his memory by his wife, Sylvia Sanders, this fund provides grants for programs that address poverty and that support economic development in and improvement of distressed neighborhoods and communities in the Eastern Panhandle.



J. Oakley Seibert Scholarship Fund 2003

This memorial scholarship helps students from Berkeley County attend law school, inspired by the life's work of an outstanding member of our community.



C. Scott and Elizabeth C. Shade Youth Fund 2004

This field-of-interest fund provides support for youth programs in Berkeley County as a legacy to Elizabeth Shade who spent her lifetime as a nurse and loved children.



Shepherdstown Day Care Endowment Fund Seed Fund

"Seeded" by the Board of Directors of the Shepherdstown Day Care Center, this fund will aid this child care provider's ability to serve so many at-risk and in-need children from our community.



Shenandoah Community Health Endowment 2006

This fund is a grantmaking arm of the Shenandoah Community Health Foundation. Its distributions aid community programs, charities, and educational institutions that promote and support comprehensive health-care service in Jefferson, Berkeley, and Morgan Counties. Operations of the Shenandoah Valley Medical System also benefit from the Fund.



Shenandoah Women's Center Fund 2005

Created in honor of 2005 Spirit of the Panhandle awardee, Ruth Veach, this fund supports the critical day-to-day work of the Shenandoah Women's Center.



Edgar McKee and Ethel D. Sites Scholarship Fund 1997

Caroline Sites Fruchtmann and William Sites created this fund in memory of their parents. It provides scholarships to graduating seniors from Martinsburg High School.



Clyde E. Smith, Jr. Fund 2006

Established as a permanent endowment by the family, friends, and colleagues of the late Clyde E. Smith, Jr., this fund assists graduating Eastern Panhandle seniors choosing to pursue a bachelor's degree in business administration.



Susan Wellford Smith Scholarship Fund 1998

Established in memory of Susan Wellford Smith by her family, this fund provides scholarships for Jefferson County female students pursuing a four-year degree who have been involved and active in athletics.



Jane P. Snyder Youth Fund 1997

Jane Snyder's interest in the health and well being of our youth and her desire to improve their opportunities and quality of life led her to create this field-of interest fund through a bequest to the Community Foundation.

SPARC Foundation Fund 2003

This donor-advised fund, founded by Bill and Barbara Scott, is dedicated to encourage human development among youth and families in the Eastern Panhandle.

Strauch Family Fund 1999

This donor-advised fund was established by Dr. Robert S. Strauch to benefit primarily arts, culture, and education.



Trinity Episcopal Church Angel Fund 2007

Founded by Phil Seibert, this fund allows the leaders of its congregation to help individuals and families in need from our community.

Trinity Lutheran Church Needmore Cemetery Fund 1997

The Trustees of Trinity Lutheran Church established this endowment fund for maintenance, repair, and upkeep of Berkeley County's Needmore Cemetery, Arden, West Virginia.



Terry Lee Walker Jr. Scholarship Fund 2006

Created in memorial to this young man who was killed in a tragic automobile accident after high-school graduation in 2002, distributions provide scholarships for students graduating from public and home schools in Jefferson and Berkeley Counties.



John S. Wharton Fund 2004

Created through the estate of John Wharton and in cooperation with First United Bank, this fund benefits eight specific charities yearly: Big Brothers Big Sisters of the Eastern Panhandle, Hospice of the Panhandle, Martinsburg Public Library, Martinsburg Rescue Mission, Salvation Army, Shawnee Girl Scouts Council, Shenandoah Area Council Boys Scouts of America, and Shenandoah Women's Center.

Helen Parker Willard Fund 2006

Created by her grandson, Henry Willard, this field-of-interest fund benefits specially designated Jefferson County cemeteries with their efforts to maintain and protect civil war gravesites and public-use areas of community history.



Geri Wissinger Fund 2006

Created by her sister in memory of the late Geri Wissinger, this donor-advised fund keeps Geri's children involved with annual grantmaking recommendations to wildlife refuges and birding sanctuaries.



The Woods Resort Scholarship Fund 2002

To promote and support public education, The Woods Resort established this fund to provide scholarships to Hedgesville High School and Berkeley Springs High School graduates with financial need.

The George Washington Chair of Living Ethics at Shepherd University 2002

In memory of the local heritage brought to our country by President George Washington, Dr. Donald Patthoff established this fund to support ethics studies at Shepherd University.



Paul and Lisa Welch Fund Seed Fund

This donor advised fund follows the charitable vision created by its founders, Paul and Lisa Welch.



Wurzburg Family Scholarship Fund 2008

Created generously in the will of Gretchen Wurzburg, generations of students graduating from Jefferson and Berkeley Counties with significant financial need and good grade point average benefit.



Wurzburg/Hill Family Fund 2008

Charitable organizations providing recreational programs in Berkeley County are recommended for annual grants from this donor-advised fund.



Wurzburg/Hill Family Church Fund 2008

Four area churches in the Martinsburg area benefit from this donor-advised fund.

Mary Morrow Van Metre Yoe Scholarship Fund 2005

Set up by her grandson, Robert Yoe, this fund helps Martinsburg High School students study nursing at West Virginia University.



June Zimmerman Health and Fitness Fund 2005

This donor-advised fund allows its namesake to provide grants to promote exercise and health in our community.

UNITED WAY FUNDS

United Way of the Eastern Panhandle Endowment Fund 2005

Distributions from this fund help to offset costs for day-to-day operations of the United Way—better ensuring community donors' gifts are maximized to meet critical needs.

United Way of the Eastern Panhandle Community Safety Net Endowment Fund 2008

Assisting families who face an immediate crisis and are unable to meet their basic needs, such as food and shelter.

United Way of the Eastern Panhandle Independent Seniors Endowment Fund 2008

Providing senior citizens with the services and opportunities to attain a decent quality of life and be safe, healthy, and engaged.

United Way of the Eastern Panhandle Strong Families Endowment Fund 2008

Helping families achieve self-sufficiency and meet their full potential by acquiring the skills and securing the resources to meet their housing, health, and other basic needs.

United Way of the Eastern Panhandle Thriving Children Endowment Fund 2008

Ensuring children and youth show normal growth and gain developmentally appropriate intellectual, physical, behavioral, emotional, and social competencies.



Legacy Society

Our Legacy Society is a distinguished list of donors committed to building charitable giving for tomorrow through a planned gift, today. Legacy Society Members have made or expect to make a gift through bequest, charitable trust, estate planning, life insurance policy, or other forms of carefully planned gifts.

- Helen Jackson Bowser
- Walter and Mary Jo Ziler Brown
- Linda Case
- Jerry L. Derflinger
- Dorothy L. Dickey
- Solomon Fine
- G. Scott Funkhouser
- Conrad C. and Mary Ann Hammann
- Eleanor Heishman
- Ruth Heishman
- Fred and Denise Hollida
- John and Eleanor Houyoux
- Floyd E. Jacques
- George Karos
- James E. Keel
- J. Philip and Doris L. Kesecker
- Arthur H. Miller
- C. David and Barbara L. Miller
- M. Elizabeth Oates
- Don and Amy Owen
- James W. Poisal
- Beth Raps, Phd
- Frederick B. Rice
- Lacy and Linda Rice
- Doug and Joan Roach
- Scott and Linda Roach
- Steven M. and Tina F. Roach
- Jennifer Roberts
- Myrtle J. Schneiderhan
- Elizabeth Shade
- Jane P. Snyder
- John S. Wharton
- Helen Mae Wolford
- Gretchen Wurzburg
- Robert B. Yoe



Legacy Philanthropists 2009

Our benefactors frequently make gifts to build a specific fund—endowment growth that benefits generations into the future.

Many of our donors also support our Annual Fund. Such gifts support day-to-day work or special events, such as the Spirit of the Panhandle gala program, Eastern Panhandle Philanthropist of the Year program, Spirit of Hardy County and Golf Tournament, Hampshire County Philanthropists of the Year program, workshops and training programs in the region, and more.

Thank you!

\$25,001 AND OVER

- » **BB&T Wealth Management**
Frada Fine Berkeley Education Fund; Terry Lee Walker Jr. Scholarship Fund & Golf Tournament; Annual Fund Cornerstone Support; Hampshire County Philanthropist of the Year Program
- » **Berkeley County Industrial Park, Inc.**
Berkeley County Industrial Park Fund
- » **Estate of Gretchen Wurzburg**
Wurzburg Family Scholarship Fund; Wurzburg/Hill Family Church Fund; Wurzburg/Hill Family Fund
- » **Claude Worthington Benedum Foundation**
Annual Fund
- » **Doug* and Joan Roach**
CCAP Loaves and Fishes Fund; Martin Luther King Scholarship Fund; George W. and Holly Woods Hancock Scholarship Fund; Endowment for the Arts (*In Memory of Mary Mahan*); Trinity Episcopal Church Angel Fund (*In Memory of Mary Seibert*); Annual Fund (*In Memory of Phil Mahan*); CCAP Loaves & Fishes; Spirit of the Panhandle
- » **Town of Wardensville**
Red Funkhouser Town Park Fund
- » **West Virginia Grantmakers**
Hampshire County Community Endowment; Hardy County Community Foundation; Hampshire County Community Foundation; Annual Fund

UP TO \$25,000

- » **Bowles Rice McDavid Graff & Love**
Annual Fund Cornerstone Support; Annual Fund In-Kind
- » **Robert and Tia* McMillan**
McMillan Family Fund (*In Honor of Mr. and Mrs. Dean Russell, Mr. and Mrs. Steve Cox, Mr. and Mrs. Charles Hensell, Mr. and Mrs. Henry Kayes, Ms. Mary Kearse, Amy Owen, Amy Pancake, Felicia Fuller, Mr. and Mrs. Frank Drumheller, Mr. and Mrs. Andy Teeter and In Memory of George Duvall, Jr.*); George W. and Holly Woods Hancock Scholarship Fund; Erin Michele Pancake Memorial Fund (*In Memory of Erin Michele Pancake*); Diane M. and James W. Dailey II Fund (*In Honor of Jim and Diane Dailey*); Endowment for the Arts (*In Memory of Mary Mahan*); Millers Electric Scholarship Fund (*In Honor of Bob and Gina Miller*); Panhandle Home Health Fund (*In Memory of Dr. Maurice Vaughan*); Hospice of the Panhandle Fund (*In Memory of Bernie Hutzler*); Martinsburg-Berkeley County War Memorial Park Fund (*In Memory of Paul Zwior*); Trinity Episcopal Church Angel Fund (*In Memory of Mary Seibert*); Wurzburg/Hill Family Church Fund (*In Honor of Travis and Scarlet Hill and In Memory of Gretchen Wurzburg*); Annual Fund (*In Memory of Phil Mahan*)
- » **Steve and Tina Roach**
Steven M. and Tina F. Roach Camp and Mission Fund; Martin Luther King Scholarship Fund; Annual Fund; CCAP Loaves & Fishes; Eastern Panhandle Free Clinic

» ROCS/Roach Energy Community

United Way Strong Families Endowment Fund; United Way of the Eastern Panhandle Fund; Terry Lee Walker Jr. Scholarship Fund & Golf Tournament; Annual Fund; Healthy Smiles Dental Clinic; United Way of the Eastern Panhandle

» United Way of the Eastern Panhandle

United Way Community Safety Net Endowment Fund; United Way Independent Seniors Endowment Fund; United Way Strong Families Endowment Fund; United Way Thriving Children Endowment Fund

UP TO \$10,000

- » **Berkley County Commission**
Eastern Panhandle Free Clinic
- » **Jeff* and Denise Boehm**
Boehm Family Fund; Annual Fund; Spirit of the Panhandle
- » **Centra Bank**
2009 Philanthropist of the Year Program; Annual Fund Cornerstone Support; Terry Lee Walker Jr. Scholarship Fund & Golf Tournament
- » **CNB Bank**
Spirit of the Panhandle and Annual Fund Cornerstone Support
- » **George and Maria Karos**
Karos Family Fund; Trinity Episcopal Church Angel Fund (*In Memory of Paul Zwior*); Healthy Smiles Dental Clinic; Annual Fund

- » **Old Opera House Theatre**
Old Opera House Theatre Endowment Fund
- » **Don and Amy Owen**
E.D. Fund; Clyde E. Smith Jr. Fund (*In Honor of Stew and Candy Berger*); David A. "Hawk" Hawken Scholarship Fund (*In Honor of Michael and Susan Whalton*); Erin Michele Pancake Memorial Fund (*In Memory of Erin Michele Pancake*); George W. and Holly Woods Hancock Scholarship Fund; McMillan Family Fund (*In Honor of Bob and Tia McMillan*); Ron Nordeen/Good Shepherd Interfaith Volunteer Caregivers Fund (*In Memory of Nancy Hockensmith*); SPARC Foundation Fund (*In Memory of Bill Scott*); Terry Lee Walker Jr. Scholarship Fund & Golf Tournament; Healthy Smiles Dental Clinic; Annual Fund; Spirit of the Panhandle
- » **Scott and Linda Roach**
Scott and Linda Roach Fund and Annual Fund
- » **Sylvia Sanders**
Robert A. Sanders Fund; Healthy Smiles Dental Clinic; Annual Fund
- » **Senior Life Services of Morgan County**
Friends of Senior Life Services of Morgan County Endowment Fund
- » **Roy and Gwen Steeley**
Steeley Memorial Scholarship Fund and Annual Fund
- » **Ann Tilley**
Annual Fund
- » **Paul and Lisa Welch**
Paul and Lisa Welch Fund; Healthy Smiles Dental Clinic; Annual Fund
- » **Robert Yoe**
Mary Morrow Van Metre Yoe Scholarship Fund

UP TO \$5,000

- » **Anonymous**
Martin Luther King Scholarship Fund and Annual Fund
- » **Allegheny Energy**
Frances Frye and June Orndorff Fund and Spirit of Hardy County
- » **BCT—Bank of Charles Town**
Potomac Valley Audubon Society Fund; Terry Lee Walker Jr. Scholarship Fund & Golf Tournament; Annual Fund Cornerstone Support
- » **Brown Funeral Home**
George W. and Holly Woods Hancock Scholarship Fund; Polly Dillon Scholarship Fund; Annual Fund

- » **Dan Ryan Builders**
Housing Action Fund and Annual Fund
- » **First United Bank & Trust**
Annual Fund Cornerstone Support
- » **Ormond and Karen Hyers**
Erin Michele Pancake Memorial Fund (*In Memory of Erin Michele Pancake*); Hampshire Volunteer Emergency Medical Services Fund; Slanesville Presbyterian Angel Fund; Wilda Michael Memorial Scholarship Fund; Annual Fund
- » **Jefferson Distributing Co.**
Big Brothers Big Sisters of the Eastern Panhandle Fund; Charles Town Rotary J.B. Smith Memorial Fund; Ginnie Molnar Fund for Special Athletes (*In Honor of Ginnie Molnar*); Panhandle Home Health Fund; Terry Lee Walker Jr. Scholarship Fund & Golf Tournament; Annual Fund
- » **Kable Auctioneer**
Rotary Club of Charles Town Charitable Programs
- » **James E. Keel***
James E. Keel Jefferson County Community Ministries Endowment Fund; Annual Fund; Spirit of the Panhandle
- » **John and JoAnn Overington**
Overington Scholarship Fund
- » **Potomac Porsche Club of America**
SPARC Foundation Fund (*In Memory of Bill Scott*)
- » **Phil Seibert**
First Presbyterian Church Angel Fund (*In Memory of Clarence Clark, Catherine Clohan, Elsie Keesecker, June Posal, Louise Power, Bill Quenzel, Vincent Townsend, Dr. Maurice Vaughn*); Trinity Episcopal Church Angel Fund (*In Memory of Dr. Bernie Hutzler, Evelyn Oates, Mary Seibert, James Steptoe, Mary Seibert*); Annual Fund
- » **Smith Nadenbousch Insurance**
Clyde E. Smith Jr. Fund; Terry Lee Walker Jr. Scholarship Fund & Golf Tournament; Spirit of the Panhandle; Annual Fund
- » **St. Marks Episcopal Church**
Robert L. Hawvermale Senior Saint Marks Episcopal Church Camp Fund
- » **Steptoe & Johnson**
Annual Fund (*In Memory of Patricia G. Steptoe*)
- » **Trinity United Methodist Church**
CCAP Loaves and Fishes Fund
- » **Henry K. Willard, II**
Annual Fund
- » **Bart and Patty Wilson**
Joan Roach Volunteer Fund for the Needy

UP TO \$2,500

- » **Big Brothers Big Sisters Eastern Panhandle**
Big Brothers Big Sisters of the Eastern Panhandle Fund
- » **Stew* and Candace Berger**
Clyde E. Smith Jr. Fund; Erin Michele Pancake Memorial Fund (*In Memory of Erin Michele Pancake*); Annual Fund (*In Memory of Phil Mahan*); Spirit of the Panhandle; Healthy Smiles Dental Clinic
- » **Britt Reed Law Offices**
Martin Luther King Scholarship Fund; Martinsburg High School Class of 1964 Scholarship Fund; United Way of the Eastern Panhandle Fund
- » **Walter* and Mary Jo Brown**
Martinsburg High School Class of 1964 Scholarship Fund; Walter and Mary Jo Ziler Brown Scholarship Fund (*In Honor of Governor and First Lady Manchin*); Annual Fund; Spirit of the Panhandle
- » **Carl M. Freeman Foundation**
Annual Fund
- » **Linda Case**
Geri Wissinger Fund; Two Rivers Giving Circle Fund; Annual Fund (*In Memory of Phil Mahan and Mary Mahan*); Spirit of the Panhandle
- » **City National Bank of West Virginia**
Spirit of the Panhandle; Annual Fund; Terry Lee Walker Jr. Scholarship Fund & Golf Tournament; SPARC Foundation Fund (*In Memory of Bill Scott*)
- » **Community Networks, Inc.**
Community Networks, Inc. Endowment Fund
- » **John L. Cowan**
Reliving History Fund (*In Memory of Abigail Burr Cowen*)
- » **David Crosby**
Anna Jo Crosby Scholarship Fund
- » **James and Diane* Dailey**
Millers Electric Scholarship Fund; Annual Fund (*In Memory of Phil Mahan*); Endowment for the Arts (*In Memory of Mary Mahan*); Erin Michele Pancake Memorial Fund (*In Memory of Erin Michele Pancake*); Martinsburg High School Class of 1964 Scholarship Fund (*In Honor of Walter and Mary Jo Brown and In Honor of Bernice Diamond*); Terry Lee Walker Jr. Scholarship Fund & Golf Tournament; Spirit of the Panhandle
- » **Drs. Russell, Pike & Nelson, P.C.**
Annual Fund and Terry Lee Walker Jr. Scholarship Fund & Golf Tournament
- » **Jim and Mary Clare* Eros**
Erin Michele Pancake Memorial Fund (*In Memory of Erin Michele Pancake*); George W. and Holly Woods Hancock Scholarship Fund; Spirit of the Panhandle

- » [Lary* and Karen Garrett](#)
Margaret Allen Fund and Spirit of Hardy County
- » [Les Golliday](#)
Martinsburg High School Class of 1964 Scholarship Fund
- » [Hampshire Center](#)
Hampshire Volunteer Emergency Medical Services Fund
- » [Hartrex Management Corporation](#)
Margaret Allen Fund and Spirit of Hardy County
- » [Charles and Deborah Hockensmith](#)
Annual Fund and Erin Michele Pancake Memorial Fund (*In Memory of Erin Michele Pancake*)
- » [Jack Huyett*](#)
Spirit of the Panhandle and Erin Michele Pancake Memorial Fund (*In Memory of Erin Michele Pancake*)
- » [Leave A Legacy West Virginia](#)
Annual Fund
- » [MG Car Club LTD Washington D.C. Centre](#)
SPARC Foundation Fund (*In Memory of Bill Scott*)
- » [Millers Electric Company](#)
Robert W. and Gina M. Miller Fund; Terry Lee Walker Jr. Scholarship Fund & Golf Tournament; Spirit of the Panhandle
- » [Jean Neely](#)
Potomac Valley Audubon Society Fund and Annual Fund
- » [David and Amy Pancake](#)
Erin Michele Pancake Memorial Fund (*In Memory of Erin Michele Pancake and In Honor of John and Barbara Pancake, Steve Pancake, Jimmy and Michele Lee*); Hampshire County Community Endowment (*In Honor of Cindy Johnson*); Hardy County Community Endowment Fund (*In Honor of Stanley Moyer*); Annual Fund; Spirit of Hardy County
- » [Pill & Pill](#)
George W. and Holly Woods Hancock Scholarship Fund; Terry Lee Walker Jr. Scholarship Fund & Golf Tournament; Annual Fund
- » [The Shockey Companies](#)
Boehm Family Fund
- » [Michael* and Susan Whalton](#)
David A. "Hawk" Hawkens Scholarship Fund; Erin Michele Pancake Memorial Fund (*In Memory of Erin Michele Pancake*); Spirit of the Panhandle
- » [Eva L. Woolridge](#)
J. Oakley Seibert Scholarship Fund and Spirit of the Panhandle
- » [Stephen and Olga Adams](#)
Terry Lee Walker Jr. Scholarship Fund & Golf Tournament
- » [John and Jenny Allen](#)
Two Rivers Giving Circle Fund
- » [The Allstate Foundation](#)
Rotary Club of Charles Town Charitable Programs
- » [Augusta Volunteer Rescue Squad](#)
Hampshire Volunteer Emergency Medical Services
- » [Michael and Bonnie Austin](#)
Austin Family Fund and Spirit of the Panhandle
- » [Donald and Beverly Baker](#)
Margaret Allen Fund
- » [Bank of Romney](#)
Hampshire County Philanthropist of the Year
- » [Dannie Wall and Wayne Braunstein](#)
Two Rivers Giving Circle Fund
- » [Michael Briel](#)
Terry Lee Walker Jr. Scholarship Fund & Golf Tournament
- » [Harold and Janice Bright](#)
Deborah, Leslie, and Christopher Bright Achievement Fund
- » [James and Frances Bullett](#)
Martin Luther King Scholarship Fund
- » [Martin Burke and Barbara Spicher](#)
Two Rivers Giving Circle Fund
- » [Capon Springs Fire Department](#)
Hampshire Volunteer Emergency Medical Services Fund
- » [Charles and Lisa Carl*](#)
Erin Michele Pancake Memorial Fund (*In Memory of Erin Michele Pancake*) and Hampshire County Ride the Rails for your Community
- » [CCAP/Loaves & Fishes](#)
CCAP/Loaves & Fishes Endowment Fund
- » [Charles Town Moose Lodge](#)
Terry Lee Walker Jr. Scholarship Fund & Golf Tournament
- » [Citicorp Credit Services](#)
Martin Luther King Scholarship Fund
- » [Phil and Betsy* Coffey](#)
Erin Michele Pancake Memorial Fund (*In Memory of Erin Michele Pancake*) and Spirit of the Panhandle
- » [Cunningham Holding, LLC](#)
Terry Lee Walker Jr. Scholarship Fund & Golf Tournament
- » [David and Dana DeJarnett](#)
Spirit of the Panhandle
- » [Donald E. Patthoff](#)
Annual Fund
- » [Walter and Mary Duke](#)
Mary and Walter Duke Teachers Scholarship Fund
- » [Paul and Sonja Embrey](#)
Erin Michele Pancake Memorial Fund (*In Memory of Erin Michele Pancake*)
- » [Patrick Ford*](#)
Margaret Allen Fund and Spirit of Hardy County
- » [Garry and Hanna Geffert](#)
Martin Luther King Scholarship Fund
- » [Jim Gilmore*](#)
Hardy County Community Endowment Fund and Spirit of Hardy County
- » [Nabal and Zinnia Giron](#)
Hampshire Volunteer Emergency Medical Services Fund and Annual Fund
- » [Ed and MaryBeth Grove](#)
Glenna Merica Grove Fund
- » [Bret Hale](#)
Terry Lee Walker Jr. Scholarship Fund & Golf Tournament
- » [Conrad* and Maryann Hammann](#)
Erin Michele Pancake Memorial Fund (*In Memory of Erin Michele Pancake*); Ron Nordeen/Good Shepherd Interfaith Volunteer Caregivers Fund (*In Memory of Nancy Hockensmith*); Annual Fund
- » [Hampshire Review](#)
Erin Michele Pancake Memorial Fund (*In Memory of Erin Michele Pancake*); Hampshire County Ride the Rails for your Community; Hampshire Wellness and Fitness
- » [Harris Community Care, Inc.](#)
Trinity Episcopal Church Angel Fund (*In Memory of Mary Seibert*) and Spirit of the Panhandle
- » [Billy, Peggy, and Gene Hendrick](#)
Spirit of the Panhandle
- » [Highlands Bankshares](#)
Spirit of Hardy County
- » [Travis and Scarlett Hill](#)
Spirit of the Panhandle
- » [Beverly Hosby](#)
Martin Luther King Scholarship Fund
- » [IBM](#)
Hardy County Community Endowment to benefit Hardy County Library
- » [Jason's Antiques](#)
Rotary Club of Charles Town Charitable Programs

UP TO \$1,000

- » [A.G. Van Metre Services, Inc.](#)
Erin Michele Pancake Memorial Fund (*In Memory of Erin Michele Pancake*)

UP TO \$1,000 (CONTINUED)

- » **Karos Enterprises**
Karos Family Fund and Spirit of the Panhandle
- » **Henry* and Amy Kayes**
Annual Fund
- » **Larry* and Ellen Kessel**
Spirit of Hardy County
- » **Carl Kreyenbuhl**
Spirit of Hardy County
- » **Bryan and Christy Law**
Erin Michele Pancake Memorial Fund (*In Memory of Erin Michele Pancake*)
- » **Roger and Mary Lewis**
Martin Luther King Scholarship Fund
- » **The Loy Foundation**
Hampshire County Philanthropist of the Year
- » **Connie Mahan**
Endowment for the Arts (*In Memory of Mary Mahan*); Annual Fund (*In Memory of Ann Carr Dickson*)
- » **Dorothea Malsbary**
Two Rivers Giving Circle Fund
- » **Martin Distributing Company**
Spirit of the Panhandle
- » **Martins Food Company**
Spirit of the Panhandle
- » **Ellen May**
Two Rivers Giving Circle Fund
- » **Robert* and Kim Mayhew**
Erin Michele Pancake Memorial Fund (*In Memory of Erin Michele Pancake*)
- » **John and Stephanie McCormick**
Geri Wissinger Fund
- » **Robert and Katherine McMillan**
McMillan Family Fund
- » **Meadow Hill Farm**
Terry Lee Walker Jr. Scholarship Fund & Golf Tournament
- » **David C. and Barbara Miller**
Habitat for Humanity Fund and Spirit of the Panhandle
- » **Gina M. Miller**
Martinsburg High School Class of 1964 Scholarship Fund
- » **Thomas Miller**
Terry Lee Walker Jr. Scholarship Fund & Golf Tournament
- » **H.F. Monahan**
Erin Michele Pancake Memorial Fund (*In Memory of Erin Michele Pancake*)
- » **Morgan Financial Group of WV**
Spirit of the Panhandle
- » **Stanley Moyer***
Spirit of Hardy County
- » **Patrick and Beverly Murphy**
Martin Luther King Scholarship Fund; Annual Fund; Spirit of the Panhandle
- » **National Audubon Society—Washington D.C. Office**
Endowment for the Arts (*In Memory of Mary Mahan*) and Annual Fund (*In Memory of Phil Mahan*)
- » **Robert Orders**
Margaret Allen Fund
- » **Our Lady of Grace Church**
Erin Michele Pancake Memorial Fund (*In Memory of Erin Michele Pancake*)
- » **Aaron and Ann Paonessa**
Two Rivers Giving Circle Fund
- » **Pendleton Community Bank**
Spirit of Hardy County
- » **Roger* and Wanda Perry**
Spirit of the Panhandle
- » **Jon and Diana Pike**
Martin Luther King Scholarship Fund
- » **Meredith L. Polen**
Terry Lee Walker Jr. Scholarship Fund & Golf Tournament
- » **Paul and Susan Pritchard**
Two Rivers Giving Circle Fund
- » **Ruth Pritchard***
Erin Michele Pancake Memorial Fund (*In Memory of Erin Michele Pancake*) and Spirit of the Panhandle
- » **Progressive Printing**
Annual Fund In-Kind
- » **William F. Queen**
Martin Luther King Scholarship Fund and Annual Fund
- » **John and Courtney Rees**
Erin Michele Pancake Memorial Fund (*In Memory of Erin Michele Pancake*)
- » **Sally Cushwa Reid**
Martinsburg High School Class of 1964 Scholarship Fund (*In Memory of Bernice Diamond*)
- » **Robert and Linda Reynolds**
Two Rivers Giving Circle Fund
- » **Lacy Rice, Jr.**
Annual Fund
- » **Romney Rescue Squad**
Hampshire Volunteer Emergency Medical Services Fund
- » **Rotary Club of Charles Town**
Charles Town Rotary J.B. Smith Memorial Fund
- » **Rotary Club of Martinsburg**
Dr. N. Blaine Groves/Rotary Scholarship Fund
- » **Dean and Betty* Russell**
George W. and Holly Woods Hancock Scholarship Fund; Erin Michele Pancake Memorial Fund (*In Memory of Erin Michele Pancake*); Spirit of the Panhandle
- » **David T. Seibert**
J. Oakley Seibert Scholarship Fund
- » **Trudy Seita**
William Brady and Jean Rannells Taylor Fund
- » **Ivan and Betty Severson**
Annual Fund and Spirit of the Panhandle
- » **Slanesville Volunteer Ambulance Company**
Hampshire Volunteer Emergency Medical Services Fund
- » **Peter F. Smith**
Two Rivers Giving Circle Fund
- » **Smithfield Farm**
Susan Wellford Smith Scholarship Fund
- » **Susan Katherine Snell**
Erin Michele Pancake Memorial Fund (*In Memory of Erin Michele Pancake*)
- » **Philip P. Steptoe**
Martinsburg High School Class of 1964 Scholarship Fund
- » **Summit Community Bank**
Spirit of Hardy County
- » **Summit Point Raceway**
Spirit of the Panhandle and Annual Fund
- » **Joseph and Becky Szabo**
Erin Michele Pancake Memorial Fund (*In Memory of Erin Michele Pancake*) and Annual Fund
- » **T-Stats Supply, Inc.**
Terry Lee Walker Jr. Scholarship Fund & Golf Tournament
- » **The First Tee of Beckley**
Terry Lee Walker Jr. Scholarship Fund & Golf Tournament
- » **Brian and Darlene Truman**
Desiree Shields Fund and Annual Fund
- » **The Union Sales Company**
United Way of the Eastern Panhandle Fund and Annual Fund
- » **Waldeck Appraisal Company, LLC.**
Terry Lee Walker Jr. Scholarship Fund & Golf Tournament and Annual Fund

- » **Terry* and Margaret Walker**
Erin Michele Pancake Memorial Fund (*In Memory of Erin Michele Pancake*); George W. and Holly Woods Hancock Scholarship Fund
- » **William Walls**
Terry Lee Walker Jr. Scholarship Fund & Golf Tournament
- » **Walmart**
Rotary Club of Charles Town Charitable Programs
- » **Dale Walter**
Two Rivers Giving Circle Fund
- » **Gene Wissinger**
Geri Wissinger Fund

UP TO \$250

- » **Herb and Sandra Adrian**
Erin Michele Pancake Memorial Fund (*In Memory of Erin Michele Pancake*)
- » **Geraldine Alkire**
Erin Michele Pancake Memorial Fund (*In Memory of Erin Michele Pancake*)
- » **Madie Alkire**
Erin Michele Pancake Memorial Fund (*In Memory of Erin Michele Pancake*)
- » **Anonymous**
Martin Luther King Scholarship Fund
- » **James T. Armstrong**
Terry Lee Walker Jr. Scholarship Fund & Golf Tournament
- » **Douglas W. Arvin**
Martinsburg High School Class of 1964 Scholarship Fund
- » **Manny Arvon**
Martin Luther King Scholarship Fund
- » **Augusta Wide Awake 4-H Club**
Erin Michele Pancake Memorial Fund (*In Memory of Erin Michele Pancake*)
- » **Baker Insurance Services**
Spirit of Hardy County
- » **Baker Ruritan Club**
Spirit of Hardy County
- » **Stephen Baker**
Spirit of Hardy County
- » **Betty Baker**
Margaret Allen Fund
- » **John D. Barrat**
Terry Lee Walker Jr. Scholarship Fund & Golf Tournament
- » **Basic Concepts**
Terry Lee Walker Jr. Scholarship Fund & Golf Tournament
- » **Bavarian Inn**
Terry Lee Walker Jr. Scholarship Fund & Golf Tournament
- » **Jennifer Belton**
Annual Fund
- » **Ivan Benavides**
Terry Lee Walker Jr. Scholarship Fund & Golf Tournament
- » **Ethel Blackman**
Martin Luther King Scholarship Fund
- » **Frank A. Bonacci**
Endowment for the Arts (*In Memory of Mary Mahan*) and Annual Fund (*In Memory of Phil Mahan*)
- » **Everett and Gail Boober**
Terry Lee Walker Jr. Scholarship Fund & Golf Tournament
- » **David Bostic**
Terry Lee Walker Jr. Scholarship Fund & Golf Tournament
- » **Tim and Mary Alice Bowers**
Terry Lee Walker Jr. Scholarship Fund & Golf Tournament
- » **Gary and Charlene Bradfield**
Hampshire County Ride the Rails for your Community
- » **Alan* and Ginger Brill**
Eastern West Virginia Community Foundation Administrative Endowment Fund
- » **Charles Brown***
Trinity Episcopal Church Angel Fund (*In Memory of Mary Seibert*)
- » **James and Elizabeth Brown**
Terry Lee Walker Jr. Scholarship Fund & Golf Tournament
- » **Jennifer L. Brown**
Terry Lee Walker Jr. Scholarship Fund & Golf Tournament
- » **John J. Brown**
Terry Lee Walker Jr. Scholarship Fund & Golf Tournament
- » **Stephen and Mary Brown**
Terry Lee Walker Jr. Scholarship Fund & Golf Tournament
- » **Scott Bucey**
Terry Lee Walker Jr. Scholarship Fund & Golf Tournament
- » **Vicky Bullett**
Martin Luther King Scholarship Fund
- » **Howard and Pat Burkhardt**
Bonn Poland Family Roundhouse Recreation Fund (*In Honor of Buzz Poland*)
- » **Kathryn Burkhardt**
Martinsburg High School Class of 1964 Scholarship Fund
- » **James Burton**
Spirit of Hardy County
- » **Cindy Butler**
Erin Michele Pancake Memorial Fund (*In Memory of Erin Michele Pancake*)
- » **Vicki K. Butler**
Martinsburg High School Class of 1964 Scholarship Fund
- » **Jeff and Kathie Campbell**
Martin Luther King Scholarship Fund
- » **Tom* and Patricia Campbell**
Hampshire County Ride the Rails for your Community
- » **Gat* and Susan Caperton**
Eastern West Virginia Community Foundation Administrative Endowment Fund
- » **Mary Lou Carey**
Erin Michele Pancake Memorial Fund (*In Memory of Erin Michele Pancake*)
- » **Vivian D. Carson**
Martin Luther King Scholarship Fund
- » **Don W. Bullett and Traci L. Carter**
Martin Luther King Scholarship Fund
- » **Cheri Catanese**
Charles Town Rotary J.B. Smith Memorial Fund
- » **Richard and Vickie Catlett**
Terry Lee Walker Jr. Scholarship Fund & Golf Tournament
- » **Fred and Janet Cavin**
Erin Michele Pancake Memorial Fund (*In Memory of Erin Michele Pancake*)
- » **Helen Chambers**
Spirit of Hardy County
- » **Charles Town Races & Slots**
Terry Lee Walker Jr. Scholarship Fund & Golf Tournament
- » **Thomas and Michele Chatellier**
Trinity Episcopal Church Angel Fund (*In Memory of Mary Seibert*)
- » **James and Sharon Childress**
Erin Michele Pancake Memorial Fund (*In Memory of Erin Michele Pancake*)
- » **B. Joyce Cole**
Reliving History Fund
- » **Melvin E. Cole Jr.**
Martinsburg High School Class of 1964 Scholarship Fund
- » **Phil and Frances Cox**
Spirit of the Panhandle

UP TO \$250 (CONTINUED)

- » **Ruth M. Craven**
Martin Luther King Scholarship Fund
- » **Robert and Carolyn Crawford**
Terry Lee Walker Jr. Scholarship Fund & Golf Tournament
- » **Thomas and Cindy Cummings**
Spirit of the Panhandle
- » **Shannon Cunningham**
Annual Fund
- » **Clarence E. Curry Sr.**
Martin Luther King Scholarship Fund
- » **Calvin S. Dearborn**
Spirit of Hardy County
- » **Denver DeHaven**
Martinsburg High School Class of 1964 Scholarship Fund
- » **Jerry and Fran Detrick**
Erin Michele Pancake Memorial Fund (*In Memory of Erin Michele Pancake*)
- » **Dodson Pest Control**
Terry Lee Walker Jr. Scholarship Fund & Golf Tournament
- » **Lee R. Moore**
Terry Lee Walker Jr. Scholarship Fund & Golf Tournament
- » **Dunvegan Farm**
SPARC Foundation Fund (*In Memory of Bill Scott*)
- » **Richard S. Durham**
Spirit of the Panhandle
- » **Eastern Panhandle WV-NAIFA**
Trinity Episcopal Church Angel Fund (*In Memory of Mary Seibert*)
- » **Eastern Panhandle WVU Alumni Association**
Eastern Panhandle WVU Alumni Association Scholarship Fund
- » **Energy Fitness, LLC**
Terry Lee Walker Jr. Scholarship Fund & Golf Tournament
- » **Mary Frances Evans**
Spirit of Hardy County
- » **Beverly Evert**
Erin Michele Pancake Memorial Fund (*In Memory of Erin Michele Pancake*)
- » **Genny Ferri**
Erin Michele Pancake Memorial Fund (*In Memory of Erin Michele Pancake*)
- » **Jeremy and Susan Findlay**
SPARC Foundation Fund (*In Memory of Bill Scott*)
- » **Fisher Family Dentistry**
Spirit of Hardy County
- » **Kenneth and Nancy Fizer**
Martin Luther King Scholarship Fund
- » **Gary Fleming***
Erin Michele Pancake Memorial Fund (*In Memory of Erin Michele Pancake*)
- » **Calvin Fleming**
Charles Town Rotary J.B. Smith Memorial Fund
- » **Foltz Litter Inc.**
Spirit of Hardy County
- » **Charles and Linda Foreman**
Martinsburg High School Class of 1964 Scholarship Fund
- » **Formula Race Car Club of America, LLC**
SPARC Foundation Fund (*In Memory of Bill Scott*)
- » **Fort Edwards 4-H Club**
Erin Michele Pancake Memorial Fund (*In Memory of Erin Michele Pancake*)
- » **Gregory Foster**
Terry Lee Walker Jr. Scholarship Fund & Golf Tournament
- » **Foundation for the Tri-State Community**
Annual Fund (*In Memory of Phil Mahan*)
- » **Jessica Fout**
Hampshire County Ride the Rails for your Community
- » **John and Julie Frazer**
Hampshire County Ride the Rails for your Community
- » **Betty L. Fulk**
Martinsburg High School Class of 1964 Scholarship Fund (*In Memory of Morrison Fulk*)
- » **Shawn and Felicia Fuller**
Erin Michele Pancake Memorial Fund (*In Memory of Erin Michele Pancake and In Honor of Amy Pancake*) and E.D. Fund (*In Honor of Amy Owen*)
- » **Lucille Gohdes**
Spirit of Hardy County
- » **Claudette Graham**
Martin Luther King Scholarship Fund
- » **James and Joyce Griffin**
Martin Luther King Scholarship Fund
- » **Guys Buick**
Terry Lee Walker Jr. Scholarship Fund & Golf Tournament
- » **Richard and Nona Hager**
Martinsburg High School Class of 1964 Scholarship Fund (*In Memory of Morrison Fulk*)
- » **Dennis and Mary Hall**
Erin Michele Pancake Memorial Fund (*In Memory of Erin Michele Pancake*)
- » **Sue Halterman**
Spirit of Hardy County
- » **Dick* and Mary Hamblin**
Wilda Michael Memorial Scholarship Fund
- » **Patricia Ann Hammock**
Trinity Episcopal Church Angel Fund (*In Memory of Mary Seibert*)
- » **Hardy County Public Library Commission**
Spirit of Hardy County
- » **Roy and Carol Hawkens**
David A. "Hawk" Hawkens Scholarship Fund (*In Memory of Colonel Edward Hawkens*)
- » **Hawse Shop-n-Save**
Spirit of Hardy County
- » **Duane and Janet Heishman**
Hampshire County Ride the Rails for your Community
- » **Eugene and Jane Heishman**
Hampshire County Ride the Rails for your Community
- » **Lisa Hendrick**
Spirit of the Panhandle
- » **Larry and Carol Hobbs**
Erin Michele Pancake Memorial Fund (*In Memory of Erin Michele Pancake*)
- » **James W. Hockenberry**
Martinsburg High School Class of 1964 Scholarship Fund
- » **Charles and Mary Hoes**
Martin Luther King Scholarship Fund
- » **Holiday Inn Express**
SPARC Foundation Fund (*In Memory of Bill Scott*)
- » **Dale Homan**
Terry Lee Walker Jr. Scholarship Fund & Golf Tournament
- » **C.H.M. and Shirley Jacques**
Spirit of the Panhandle
- » **Paula and Greg Janes**
Martinsburg High School Class of 1964 Scholarship Fund
- » **Johnnies Restaurant & Hotel Service**
Terry Lee Walker Jr. Scholarship Fund & Golf Tournament
- » **Raymond Johnson**
Terry Lee Walker Jr. Scholarship Fund & Golf Tournament
- » **The Journal**
Terry Lee Walker Jr. Scholarship Fund & Golf Tournament
- » **Mary B. Kearse**
Spirit of the Panhandle

- » **William and Becky Keaton**
Hampshire County Ride the Rails for your Community
- » **Kimberly D. Keckley**
Erin Michele Pancake Memorial Fund (*In Memory of Erin Michele Pancake*)
- » **Charlie and Linda Keeling**
Charles Town Rotary J.B. Smith Memorial Fund
- » **Beverly A. Wilcox and E. William Kegg**
Erin Michele Pancake Memorial Fund (*In Memory of Erin Michele Pancake*)
- » **William and Marcia Keister**
Hampshire County Ride the Rails for your Community
- » **Curtis and Rebecca Keller**
SPARC Foundation Fund (*In Memory of Bill Scott*)
- » **Rolfe and Bonita Kelley**
SPARC Foundation Fund (*In Memory of Bill Scott*)
- » **William E. Keplinger, Jr.**
Spirit of Hardy County
- » **Kings New York Pizza of Kearneysville**
Terry Lee Walker Jr. Scholarship Fund & Golf Tournament
- » **Kiwanis Club of Shepherdstown**
Terry Lee Walker Jr. Scholarship Fund & Golf Tournament
- » **Susan Landis**
Annual Fund (*In Memory of Phil Mahan*) and Endowment for the Arts (*In Memory of Mary Mahan*)
- » **Richard and Cindy Lawver**
Terry Lee Walker Jr. Scholarship Fund & Golf Tournament
- » **Walter and Irene Layman**
Erin Michele Pancake Memorial Fund (*In Memory of Erin Michele Pancake*)
- » **Les Folies Brasserie**
SPARC Foundation Fund (*In Memory of Bill Scott*)
- » **Sylvester W. Lickey**
Martinsburg High School Class of 1964 Scholarship Fund
- » **David Lillard**
Two Rivers Giving Circle Fund
- » **Larry Lind**
Hampshire County Ride the Rails for your Community
- » **Garrett and Bonnie Long**
Erin Michele Pancake Memorial Fund (*In Memory of Erin Michele Pancake*)
- » **Jan D. Lorber**
Spirit of the Panhandle
- » **Daniel and Barbara Lorenz**
Erin Michele Pancake Memorial Fund (*In Memory of Erin Michele Pancake*)
- » **Kelly H. Lowe**
Terry Lee Walker Jr. Scholarship Fund & Golf Tournament
- » **James and Nancy Macdonnell**
Martin Luther King Scholarship Fund
- » **Charles* and Suzzan Maddy**
Erin Michele Pancake Memorial Fund (*In Memory of Erin Michele Pancake*)
- » **Nancy Maddy**
Charles Town Rotary J.B. Smith Memorial Fund
- » **Lydia Mahan**
Endowment for the Arts (*In Memory of Mary Mahan*) and Erin Michele Pancake Memorial Fund (*In Memory of Erin Michele Pancake*)
- » **Mary Ellen Mahoney**
Terry Lee Walker Jr. Scholarship Fund & Golf Tournament
- » **Ralph Manaker**
SPARC Foundation Fund (*In Memory of Bill Scott*)
- » **Cheryl Dianne Maselli**
Terry Lee Walker Jr. Scholarship Fund & Golf Tournament
- » **Mathias Ruritan Club**
Spirit of Hardy County
- » **Gary and Daisy McBride**
Hampshire County Ride the Rails for your Community
- » **Dudley and Elizabeth McCready**
Erin Michele Pancake Memorial Fund (*In Memory of Erin Michele Pancake*)
- » **James S. Albertoli MDFACS LLC**
Terry Lee Walker Jr. Scholarship Fund & Golf Tournament
- » **Julia McMillan-Jones**
McMillan Family Fund
- » **Mcneer, Highland, McMunn & Varner LC**
Terry Lee Walker Jr. Scholarship Fund & Golf Tournament
- » **James and Wanda McPeake**
Spirit of Hardy County
- » **Jeff Meetre**
Erin Michele Pancake Memorial Fund (*In Memory of Erin Michele Pancake*)
- » **Richard and Micheria Merica**
Glenna Merica Grove Fund (*In Memory of Glenna Merica Grove*)
- » **Jane O. Metford**
Martinsburg High School Class of 1964 Scholarship Fund
- » **Ned Miller**
Erin Michele Pancake Memorial Fund (*In Memory of Erin Michele Pancake*)
- » **Mills & Wagner PLLC**
Terry Lee Walker Jr. Scholarship Fund & Golf Tournament
- » **Gary and Mary Minutes**
Erin Michele Pancake Memorial Fund (*In Memory of Erin Michele Pancake*)
- » **Ginnie Molnar**
Spirit of the Panhandle
- » **Kathryn Moomau**
Spirit of Hardy County
- » **Stella Moon**
Erin Michele Pancake Memorial Fund (*In Memory of Erin Michele Pancake*)
- » **Michael and Brenda Mullin**
Martinsburg High School Class of 1964 Scholarship Fund
- » **Multi-Media Communications**
Spirit of the Panhandle
- » **MVB Bank**
Spirit of the Panhandle
- » **NAACP–Berkeley County Branch**
Spirit of the Panhandle
- » **Lee and Jeanne Noble**
Martinsburg High School Class of 1964 Scholarship Fund
- » **Sherry F. Noren**
Martinsburg High School Class of 1964 Scholarship Fund
- » **Liz Oates**
Martinsburg High School Class of 1964 Scholarship Fund and Terry Lee Walker Jr. Scholarship Fund & Golf Tournament
- » **David and Jane O'Bryan**
Erin Michele Pancake Memorial Fund (*In Memory of Erin Michele Pancake*)
- » **Angela Oglesby**
Martin Luther King Scholarship Fund
- » **Glenna R. Pack**
Erin Michele Pancake Memorial Fund (*In Memory of Erin Michele Pancake*)
- » **Palmers Excavating LLC**
Terry Lee Walker Jr. Scholarship Fund & Golf Tournament
- » **Ann S. Pancake**
Erin Michele Pancake Memorial Fund (*In Memory of Erin Michele Pancake*)
- » **Joe S. and Robin Pancake**
Erin Michele Pancake Memorial Fund (*In Memory of Erin Michele Pancake*)

UP TO \$250 (CONTINUED)

- » **Panhandle Builders & Excavating, Inc.**
Annual Fund
- » **Patrice Paton David A. "Hawk" Hawkens Scholarship Fund**
In Memory of Colonel Edward Hawkens
- » **Taylor Perry***
Spirit of the Panhandle
- » **Darin and Susan Peters**
Erin Michele Pancake Memorial Fund (*In Memory of Erin Michele Pancake*)
- » **Donald and Phyllis Peters**
Erin Michele Pancake Memorial Fund (*In Memory of Erin Michele Pancake*)
- » **Clifford Peyton**
Martin Luther King Scholarship Fund and Spirit of the Panhandle
- » **Stephani Pierson**
Martin Luther King Scholarship Fund
- » **Ned Pitzer**
Terry Lee Walker Jr. Scholarship Fund & Golf Tournament
- » **Rodney Pointdexter**
Terry Lee Walker Jr. Scholarship Fund & Golf Tournament
- » **Barbara Polhamus**
Martinsburg High School Class of 1964 Scholarship Fund
- » **William and Sharon Powell**
Spirit of the Panhandle
- » **Power Concepts**
Erin Michele Pancake Memorial Fund (*In Memory of Erin Michele Pancake*)
- » **Prettyman Broadcasting Company Inc.**
Spirit of the Panhandle
- » **David W. Ralston**
Terry Lee Walker Jr. Scholarship Fund & Golf Tournament
- » **Reeds Drug Store**
Hampshire Volunteer Emergency Medical Services Fund
- » **Bonnie Reinfried**
Spirit of the Panhandle
- » **Leona Reynolds**
Spirit of Hardy County
- » **William Riggelman**
Spirit of Hardy County
- » **Stephen and Cindy Ritz**
Erin Michele Pancake Memorial Fund (*In Memory of Erin Michele Pancake*)
- » **Ramona Robinson**
Martin Luther King Scholarship Fund
- » **Brent and Mary Catherine Robinson**
Joan Roach Volunteer Fund for the Needy
- » **Rosabell Roman**
Martin Luther King Scholarship Fund
- » **Romney Can't Be Beat 4-H Club**
Erin Michele Pancake Memorial Fund (*In Memory of Erin Michele Pancake*)
- » **Romney Rising Star 4-H Club**
Erin Michele Pancake Memorial Fund (*In Memory of Erin Michele Pancake*)
- » **Rotary Club of Romney**
Erin Michele Pancake Memorial Fund (*In Memory of Erin Michele Pancake*)
- » **Susan Sirbaugh Rubenstein***
Erin Michele Pancake Memorial Fund (*In Memory of Erin Michele Pancake*)
- » **Hugh and Linda Russ**
Endowment for the Arts (*In Memory of Mary Mahan*)
- » **George Rutherford**
Spirit of the Panhandle
- » **Jay and Lynda Rutkowski**
Spirit of the Panhandle
- » **Roger L. Salen**
Terry Lee Walker Jr. Scholarship Fund & Golf Tournament
- » **Robert and Kathy Sanders**
Robert A. Sanders Fund (*In Honor of Sylvia Sanders*)
- » **Sandy Ridge Almost Heaven 4-H Club**
Erin Michele Pancake Memorial Fund (*In Memory of Erin Michele Pancake*)
- » **Santa Barbara Law Offices, PLLC**
Martin Luther King Scholarship Fund
- » **G. T. and Susan Schramm**
Spirit of the Panhandle
- » **Lawrence Schultz**
Terry Lee Walker Jr. Scholarship Fund & Golf Tournament
- » **William T. Scott**
Terry Lee Walker Jr. Scholarship Fund & Golf Tournament
- » **Charles* and Sallie See**
Erin Michele Pancake Memorial Fund (*In Memory of Erin Michele Pancake*)
- » **Lynne Seibert**
Spirit of the Panhandle
- » **David and Beth Seiffert**
Erin Michele Pancake Memorial Fund (*In Memory of Erin Michele Pancake*)
- » **Shaw & Shaw, A.C.**
Terry Lee Walker Jr. Scholarship Fund & Golf Tournament
- » **Shenandoah Valley Medical Systems**
Spirit of the Panhandle
- » **Shepherd University Foundation**
SPARC Foundation Fund (*In Memory of Bill Scott*)
- » **Shepherdstown Lutheran Parish**
Martin Luther King Scholarship Fund
- » **Edward and Debra Sherlock**
Hampshire County Ride the Rails for your Community
- » **Richard Shiffman**
Martin Luther King Scholarship Fund
- » **Hoy and Phyllis Shingleton**
Erin Michele Pancake Memorial Fund (*In Memory of Erin Michele Pancake*)
- » **Jean Shoemaker**
Erin Michele Pancake Memorial Fund (*In Memory of Erin Michele Pancake*)
- » **Bonnie Shultz**
Spirit of the Panhandle
- » **Elliot and Isabel Simon**
Terry Lee Walker Jr. Scholarship Fund & Golf Tournament
- » **Judith and John Sjostedt**
Annual Fund (*In Memory of Phil Mahan*)
- » **Slingblade of Jax, Inc.**
Martin Luther King Scholarship Fund
- » **Dennis Small**
Charles Town Rotary J.B. Smith Memorial Fund
- » **Robert and Miriam Smith**
Erin Michele Pancake Memorial Fund (*In Memory of Erin Michele Pancake*)
- » **Porter Smith**
Erin Michele Pancake Memorial Fund (*In Memory of Erin Michele Pancake*)
- » **Clyde "Tripp" E. Smith III**
Clyde E. Smith Jr. Fund
- » **Donna and James Snow**
David A. "Hawk" Hawkens Scholarship Fund (*In Memory of Colonel Edward Hawkens and Captain David "Hawk" Hawkens*)
- » **South Branch Inn**
Spirit of Hardy County
- » **James and Mary Staley**
Martinsburg High School Class of 1964 Scholarship Fund

- » **State Farm Insurance–Judy Ball**
Erin Michele Pancake Memorial Fund (*In Memory of Erin Michele Pancake*)
- » **State Farm Insurance–Lana Schultz**
Terry Lee Walker Jr. Scholarship Fund & Golf Tournament
- » **Kathryn P. Steiner**
Erin Michele Pancake Memorial Fund (*In Memory of Erin Michele Pancake*)
- » **Bryan Steward***
Erin Michele Pancake Memorial Fund (*In Memory of Erin Michele Pancake*)
- » **Robert C. Stone, Jr.**
Terry Lee Walker Jr. Scholarship Fund & Golf Tournament
- » **Fred Stout**
Terry Lee Walker Jr. Scholarship Fund & Golf Tournament
- » **Scott A. Stout**
Erin Michele Pancake Memorial Fund (*In Memory of Erin Michele Pancake*)
- » **William and Betty Stover**
Martin Luther King Scholarship Fund
- » **Gary and Kaye Strawn**
Erin Michele Pancake Memorial Fund (*In Memory of Erin Michele Pancake*)
- » **Sussex Company**
Terry Lee Walker Jr. Scholarship Fund & Golf Tournament
- » **Sutton and Janelle, Attorneys**
Terry Lee Walker Jr. Scholarship Fund & Golf Tournament
- » **John B. Sutton**
Terry Lee Walker Jr. Scholarship Fund & Golf Tournament
- » **J. Brooke Taylor**
Spirit of the Panhandle
- » **William and Lili Taylor**
Erin Michele Pancake Memorial Fund (*In Memory of Erin Michele Pancake*)
- » **The Bennett Agency**
SPARC Foundation Fund (*In Memory of Bill Scott*)
- » **Henry and Rose Thomas**
Jefferson County Schools Education Foundation Fund and Martin Luther King Scholarship Fund
- » **Phillip Thomas**
SPARC Foundation Fund (*In Memory of Bill Scott*)
- » **Henry and Earlene Thornton**
Martin Luther King Scholarship Fund
- » **Larry and Pam Thornton**
Annual Fund (*In Memory of Philip B. Hill*)
- » **Tim Nichols**
Erin Michele Pancake Memorial Fund (*In Memory of Erin Michele Pancake*)
- » **William and Julie Timmermeyer**
Erin Michele Pancake Memorial Fund (*In Memory of Erin Michele Pancake*)
- » **Robin Truax**
Martin Luther King Scholarship Fund
- » **C. Douglas and Roxie Tucker**
Terry Lee Walker Jr. Scholarship Fund & Golf Tournament
- » **Douglas and Andrea Van Hook**
Erin Michele Pancake Memorial Fund (*In Memory of Erin Michele Pancake*)
- » **Virginia Vance**
Frances Frye and June Orndorff Fund
- » **John F. Vaughn**
Terry Lee Walker Jr. Scholarship Fund & Golf Tournament
- » **Gregory and Ruth Veach**
Spirit of the Panhandle
- » **M.J. Vorbach**
Erin Michele Pancake Memorial Fund (*In Memory of Erin Michele Pancake*)
- » **David and Joanne Wadsworth**
Terry Lee Walker Jr. Scholarship Fund & Golf Tournament
- » **Judith Waldeck**
Martinsburg High School Class of 1964 Scholarship Fund (*In Honor of Bernice Diamond*)
- » **John J. Walker, Jr.**
Terry Lee Walker Jr. Scholarship Fund & Golf Tournament
- » **Walker Properties**
Terry Lee Walker Jr. Scholarship Fund & Golf Tournament and Martin Luther King Scholarship Fund
- » **John J. and Sarah Walker**
Terry Lee Walker Jr. Scholarship Fund & Golf Tournament
- » **Warner Productions**
Terry Lee Walker Jr. Scholarship Fund & Golf Tournament
- » **Dean and Nancy Warrenfeltz**
Spirit of the Panhandle
- » **Kareem Washington**
Terry Lee Walker Jr. Scholarship Fund & Golf Tournament
- » **Emily Waters**
Martin Luther King Scholarship Fund
- » **Kurt Weidman**
Trinity Episcopal Church Angel Fund (*In Memory of Mary Seibert*)
- » **Bill and Janice Wertman**
Martin Luther King Scholarship Fund
- » **WGAM**
Terry Lee Walker Jr. Scholarship Fund & Golf Tournament
- » **Tom Widder***
Spirit of Hardy County
- » **Dell Wightman**
Terry Lee Walker Jr. Scholarship Fund & Golf Tournament
- » **Lewis Wiley**
SPARC Foundation Fund (*In Memory of Bill Scott*)
- » **Pamela Wilkinson**
Endowment for the Arts (*In Memory of Mary Mahan*)
- » **William A. Hazel, Inc.**
Erin Michele Pancake Memorial Fund (*In Memory of Erin Michele Pancake*)
- » **Renick and Betty Williams**
Erin Michele Pancake Memorial Fund (*In Memory of Erin Michele Pancake*)
- » **Lawrence L. Willingham**
Terry Lee Walker Jr. Scholarship Fund & Golf Tournament
- » **Robert and Carolyn Wilson**
Terry Lee Walker Jr. Scholarship Fund & Golf Tournament
- » **Jeanne Wooten**
Spirit of the Panhandle
- » **Judy Wroe**
Martinsburg High School Class of 1964 Scholarship Fund (*In Memory of Charle Wroe*)
- » **Bill and Fran Wylie**
Erin Michele Pancake Memorial Fund (*In Memory of Erin Michele Pancake*)
- » **Yount, Hyde & Barbour, PC**
SPARC Foundation Fund (*In Memory of Bill Scott*)
- » **Jerry Zimmerman**
Terry Lee Walker Jr. Scholarship Fund & Golf Tournament
- » **Paul Zwior**
Terry Lee Walker Jr. Scholarship Fund & Golf Tournament

* Indicates an immediate past or current Board or Affiliate Board member.

Our apologies for any listing omitted or incorrectly stated. We make every effort to accurately reflect our donors. Please call us so we may correct our records.

GRANTS AWARDED 2009

Grants and scholarship awards are provided with a range of involvement from local donors who set up a variety of funds to support charities, as well as outside funding sources that support Community Foundation grant-making initiatives. Information in parenthesis denotes what kind of fund within the Community Foundation provided the grant. Many of the grants cited below were also reported as “pledged” grants in our last annual report.

This year, we are reporting only grants paid during the year. Slightly more than \$67,000 in additional grant funding was pledged to carry over into 2010 or thereafter. Learn more about the variety of funds that may be established on page 4.

ARTS AND CULTURE

Contemporary American Theatre Festival, Shepherdstown, WV—\$2,500

General support (donor advised fund)

COMMUNITY DEVELOPMENT

Big Brothers Big Sisters of the Eastern Panhandle, Martinsburg, WV—\$5,000

A challenge and matching gift to help build endowment and bequest giving to benefit Big Brothers Big Sisters of the Eastern Panhandle (community pass-through fund)

Community Networks, Inc., Martinsburg, WV—\$8925

A challenge and matching gift to help build endowment and bequest giving to benefit Community Networks, Inc. (community pass-through fund)

Eastern Regional Family Resource Network, Romney, WV—\$500

Support for community outreach and publications (community fund)

Future Farmers of America, Romney, WV—\$500

General support made in honor of the Hampshire County Individual Philanthropist of the Year, Alan Judy (pass-through fund)

Mt. Zion Methodist Church, Martinsburg, WV—\$1,450

General support (designated fund)

Nonprofit Education & Training (N.E.T.), Martinsburg, WV—\$1,000

Support for local community training programs to benefit area nonprofit leaders and staff as well as support for a Cooperating Collection, a searchable grants database hosted by Shepherd University Scarborough Library.

Old Opera House, Charles Town, WV—\$7,875

A challenge and matching gift to help build endowment and bequest giving to benefit Old Opera House (community pass-through fund)

Rotary Club of Charles Town, Charles Town, WV—\$1,100

General support for re-granting to charitable programs in Jefferson County (community pass-through fund)

Rotary Club of Charles Town, Charles Town, WV—\$4,500

Support for the Club's charitable activities aiding the renovation of Charles Town's Jefferson Memorial Park Pool House (community pass-through fund)

Senior Life Services of Morgan County, Berkeley Springs, WV—\$7,500

A challenge and matching gift to help build endowment and bequest giving to benefit Senior Life Services of Morgan County (community pass-through fund)

Town of Wardensville, Wardensville, WV—\$3,000

General support to build endowment to benefit area parks and recreation (community pass-through fund)

Tumai, Martinsburg, WV—\$350

General support for international water and wells repair in honor of 2009 Young Philanthropist of the Year, Evan Frank (pass-through fund)

United Way of the Eastern Panhandle, Martinsburg, WV—\$7,100

A challenge and matching gift to help build endowment and bequest giving to benefit United Way of the Eastern Panhandle (community pass-through fund)

CONSERVATION & PRESERVATION

American Conservation Film Festival, Shepherdstown, WV—\$800

To help fund a second-year photographic safari for tri-county youth (donor advised fund)

Morgan County Solid Waste Authority, Berkeley Springs, WV—\$2,175

To help purchase equipment for a permanent recycling center serving Morgan County (donor-advised fund)

Potomac Valley Audubon Society, Shepherdstown, WV—\$2,125

Seed funding for a “wee naturalist” pre-school nature program (donor advised fund)

Town of Harpers Ferry-Elks Run Watershed, Harpers Ferry, WV—\$2,022

To offset costs of Web, brochure, and community outreach (donor-advised fund)

Town of Wardensville, Wardensville, WV—\$200

Support to aid conservation of area parks (field-of-interest fund)

EDUCATION

Burlingame Community for Education, Burlingame, CA—\$500

General support to the school district (donor-advised fund)

Hedgesville Middle School, WV—\$2,000

Support for after-school programs (field-of-interest fund)

Norborne Day Care Center, Martinsburg, WV—\$3,450

General support (field-of-interest funds)

North Middle School, Martinsburg, WV—\$1,250

Purchase of first-aid equipment (field-of-interest fund)

North Middle School, Martinsburg, WV—\$2,810

Purchase of musical instruments and school technologies (field-of-interest fund)

Musselman High School, Inwood, WV—\$1,500

Support for a student directed and produced safe chemistry video (field-of-interest fund)

HEALTH

Eastern Panhandle Free Clinic, Charles Town, WV—\$13,350

To purchase medical equipment and supplies for individuals in financial need (community pass-through fund)

Hampshire County Health Department, Romney, WV—\$9,835

To help establish dental service treatment for low-income and uninsured residents in Hampshire County (community pass-through fund)

Hampshire County Health Department, Romney, WV—\$500

To aid a community wellness program for women (community fund)

Hampshire Wellness and Fitness, Romney, WV—\$100

Fitness program support for youth in the region (community pass-through fund)

Healthy Smiles of the Eastern Panhandle, Martinsburg, WV—\$17,332

Support to launch and open a new Healthy Smiles income-based fee-scale dental clinic serving the Eastern Panhandle (donor-advised funds and pass-through funds)

Hospice of the Panhandle, Martinsburg, WV—\$100

General support (donor advised fund)

Hospice of the Panhandle, Martinsburg, WV—\$7,200

Capital campaign support for new financial-need patient facility (donor advised funds)

Johns Hopkins University, Baltimore, MD—\$3,000

To support research for neurology and pediatric endocrinology (donor advised fund)

Moorefield Active Caring, Moorefield, WV—\$450

General support (community fund)

Shenandoah Valley Medical Systems, Martinsburg, WV—\$480

Support for a Hampshire County based parent education program to promote healthy eating habits in young children (community fund)

West Virginia University Children’s Hospital, Morgantown, WV—\$250

General support in honor of 2009 Hampshire County Young Philanthropist of the Year, Brittney Rinker (community pass-through fund)

HOUSING AND HOMELESSNESS

Community Networks, Inc., Martinsburg, WV—\$1,500
General support to aid women with housing shelter (field-of-interest fund)

Jefferson County Board of Education, Charles Town, WV—\$1,000
School supplies for homeless youth in the public school system (field-of-interest fund)

Martinsburg Union Rescue Mission, Martinsburg, WV—\$1,000
General support for men's shelter program (donor advised fund)

HUMAN WELFARE

CCAP Loaves and Fishes, Martinsburg, WV—\$6,350
General support to aid those in need (community pass through fund and donor advised funds)

Hardy County Family Issues Task Force, Moorefield, WV—\$200
Support for community nutrition education (community fund)

Jefferson County Community Ministries, Charles Town, WV—\$1,250
General support (designated fund and donor advised fund)

Kiwanis Club of Charles Town, Charles Town, WV—\$750
Aid for need-based Santa's Toy Shop in honor of 2009 Corporate Philanthropist of the Year, County Roads Car Club (community pass-through fund)

Lost River Food Pantry, Mathias, WV—\$450
General support (community fund)

Morgan County Starting Points, Berkeley Springs, WV—\$1,000
General support (community pass-through fund)

Slanesville Presbyterian Church, Slanesville, WV—\$250
Re-granting to those in need (designated fund)

United Way of the Eastern Panhandle, Martinsburg, WV—\$2,500
Support for 2009-2010 annual campaign (community pass-through fund)

United Way of Hampshire County, Romney, WV—\$500
General support as recommended by 2009 Hampshire County Corporate Philanthropist of the Year Hampshire Wellness and Fitness (community fund)

Wardensville Food Bank, Wardensville, WV—\$450
General support (community fund)

LITERACY

Capon Bridge Public Library, Capon Bridge, WV—\$400
General support (community pass-through fund)

Hampshire County Public Library, Romney, WV—\$400
General support (community pass-through fund)

Hedgesville Public Library, Hedgesville, WV—\$750
General support awarded in honor of 2009 Philanthropists of the Year, Ray and Madeline Johnston (community pass-through fund)

RECREATION

Hampshire High School, Romney, WV—\$1,170
To help purchase boys and girls soccer team uniforms (donor advised fund)

Morgan County Parks and Recreation, Berkeley Springs, WV—\$1,000
General support (donor advised fund)

Musselman Athletic Boosters Club, Inwood, WV—\$100
Support for Musselman football programs (donor-advised fund)

YOUTH PROGRAMS

Apollo Civic Theatre, Martinsburg, WV—\$1,000
Support for a summer youth theatre workshop (field-of-interest fund)

Berkeley County Special Olympics, Martinsburg, WV—\$1,920
Support for annual awards banquet (field-of-interest funds)

Boys and Girls Club of the Eastern Panhandle, Martinsburg, WV—\$1,000
General support (donor advised fund)

Camp Frame 4-H Association, Bunker Hill, WV—\$3,806
General support (agency fund)

CASA of the Eastern Panhandle, Martinsburg, WV—\$100
General support (donor advised fund)

Children's First Development Center, Kearneysville, WV—\$1,500
Day-care tuition assistance for low-income children (field-of-interest fund)

Children's Home Society of WV, Martinsburg, WV—\$500
General support (community pass-through fund)

City of Burlingame Parks and Recreation, Burlingame, CA—\$640
To purchase musical instruments and special projects supplies for youth programs (donor advised fund)

Ezekiel's Place Retreat Center, Hedgesville, WV—\$3,500

Support for faith-based summer conservation and camp for area children (field-of-interest fund and community pass-through fund)

Friends in Action, Shepherdstown, WV—\$3,000

General support to aid volunteer support and activism for individuals with children in financial education, occupational guidance, and household stewardship (field-of-interest fund and community pass-through fund)

Hardy County Childcare Center, Moorefield, WV—\$450

General support (community fund)

Jefferson County Parks and Recreation, Shenandoah Junction, WV—\$2,000

Tuition aid for children in need for recreational programs and camp (field-of-interest fund)

Jefferson County Public Schools Education Foundation, Charles Town, WV—\$2,500

Support to continue and expand a Jefferson county reading program (field-of-interest fund)

Jefferson County Schools Cultural Diversity Program, Charles Town, WV—\$500

General support (community pass-through fund)

Little Eagle Child Care Center, Martinsburg, WV—\$2,000

To fund a three-month arts program (community pass-through fund)

Martinsburg-Berkeley County Parks and Recreation, Martinsburg, WV—\$5,000

Support for a new multipurpose center (field-of-interest fund)

Martinsburg-Berkeley County Parks and Recreation, Martinsburg, WV—\$360

Support for scholarships for youth summer day camp tuition (donor advised fund)

Martinsburg-Berkeley County Public Library, Martinsburg, WV—\$2,500

Support for a youth summer reading program (field-of-interest fund)

Morgan Arts Council-Ice House, Berkeley Springs, WV—\$2,500

Seed funding for a new summer youth program in Paw Paw, WV (field-of-interest fund)

Morgan County Parks and Recreation, Berkeley Springs, WV—\$1,000

Support to fund phase-one development of a walking trail for youth (community pass-through fund)

Morgan County Public Library, Berkeley Springs, WV—\$1,250

General support for youth library and to purchase graphic novels for youth (donor-advised fund and field-of-interest fund)

Morgan County Starting Points, Berkeley Springs, WV—\$3,000

Support for day-care and family support services (field-of-interest fund)

Mothers Against Drunk Driving, Martinsburg, WV—\$500

General support for youth education programs (community pass-through fund)

Potomac Valley Audubon Society, Shepherdstown, WV—\$2,500

Outdoor education programs for area Title One schools (field-of-interest fund)

Potomac Valley Audubon Society, Shepherdstown, WV—\$500

To support a new environmental education program for 2nd and 3rd grade students (community pass-through fund)

St. Vincent de Paul Society of Berkeley County, Martinsburg, WV—\$1,000

Support to aid with housing assistance to individuals and their children (field-of-interest fund)

Shepherdstown Day Care Center, Shepherdstown, WV—\$4,000

Support to help purchase preschool playground equipment (field-of-interest funds and community pass-through fund)

United Way of the Eastern Panhandle, Martinsburg, WV—\$750

Annual campaign support for CASA of the Eastern Panhandle and Boys and Girls Club of the Eastern Panhandle (donor advised fund)

WVU Hospitals-East, WV Kids in Action, Martinsburg, WV—\$1,200

Support to address childhood obesity (field-of-interest funds)

Young Life, WV Chapter 34, Martinsburg, WV—\$800

General support for eastern panhandle youth programs (community pass-through fund)

Gather Grow
Grant



SCHOLARSHIPS 2009

Each scholarship fund within the Community Foundation varies, carrying the specific vision of the donor who set it up.
In 2009, scholarship grants ranged from \$250 to \$3,000.

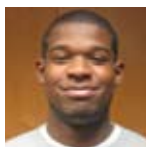


Jennifer Ashton

Graduate of Musselman High School
Attending Shepherd University
Clyde E. Smith Jr. Scholarship Fund

Asia Casey

Graduate of Musselmen High School
Attending Shepherd University
Walter and Mary Jo Ziler Brown Scholarship Fund



Leonard Dixon, Jr.

Graduate of Martinsburg High School
Attending Fairmont State University
George W. and Holly Woods Hancock Scholarship Fund
Martin Luther King, Jr. Scholarship Fund



Elisabeth Duncan

Graduate of Hedgesville High School
Attending Concord University
The Woods Resort Scholarship Fund



Rachel Eastman

Graduate of Washington High School
Attending Concord University
Martin Luther King, Jr. Scholarship Fund



Steve Eccleston

Graduate of Martinsburg High School
Attending West Virginia University
George W. and Holly Woods Hancock Fund



Matthew Ellenbecker

Graduate of Hedgesville High School
Attending West Virginia University
Karos Family Fund



Jamie Ellers

Graduate of Hampshire High School
Attending Potomac State College
David A. "Hawk" Hawkens Scholarship Fund



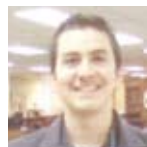
Joshua Faircloth

Graduate of Musselman High School
Attending James Rumsey Technical Institute
Millers Electric Scholarship Fund



Matthew Farrell

Junior, Hampshire High School
Alfred University Astronomy Summer Institute
**Deborah, Leslie, and Christopher
Bright Achievement Fund**



Jade Flamenco

Graduate of Jefferson High School
Attending Shepherd University
Martin Luther King Jr. Scholarship Fund
David A. "Hawk" Hawkens Scholarship Fund



Oakleigh Folkes

Graduate of Jefferson High School
Attending Vanderbilt University
Susan Wellford Smith Scholarship Fund



Alex Greenberg

Graduate of West Virginia University
Attending West Virginia University College of Law
J. Oakley Seibert Scholarship Fund



Joseph Hansroth

Graduate of Berkeley Springs High School
Attending Shepherd University
Anna Jo Crosby Scholarship Fund



Emily Hornbaker

Graduate of Berkeley Springs High School
Attending Frostburg State University
The Woods Resort Scholarship Fund



Dennis Jackman, II

Graduate of Hedgesville High School
Attending West Virginia University
Eastern Panhandle WVU Alumni Association Scholarship Fund



Trey Knepper

Graduate of Hedgesville High School
Attending Shepherd University
Polly Dillon Scholarship Fund



Sean Manning

Graduate of Musselman High School
Attending West Virginia University
Martin Luther King, Jr. Scholarship Fund



Tyler Martin

Graduate of Martinsburg High School
Attending Shepherd University
Mary and Walter Duke Teachers Scholarship Fund
Terry Lee Walker, Jr. Scholarship Fund
Martin Luther King, Jr. Scholarship Fund



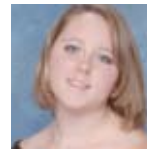
Laura Orr

Graduate of Martinsburg High School
Attending West Virginia University
Mary Marrow Van Metre Yoe Scholarship Fund



Katelyn Stoneberger

Jefferson County - Homeschooled
Attending Shepherd University
Terry Lee Walker, Jr. Scholarship Fund



Racheal Sween

Graduate of Hedgesville High School
Attending West Virginia University
N. Blaine Groves Rotary Scholarship Fund



Miranda Thorne

Graduate of Hampshire High School
Attending Potomac State College
Wilda Michael Memorial Scholarship Fund



Jessica Van Diest

Graduate of Musselman High School
Attending Shepherd University
Terry Lee Walker, Jr. Scholarship Fund



Brian Wilt

Graduate of Washington High School
Attending Shepherd University
Terry Lee Walker, Jr. Scholarship Fund

APPLYING FOR A GRANT

Many of our funds distribute grants without prior application or interaction with selected recipients. Each year, the Eastern West Virginia Community Foundation, Hardy County Community Foundation, Hampshire County Community Foundation request proposals from groups serving specific fields of interest and donor vision. To be placed on our mailing list and receive grant announcements, please send information about your organization to us.

APPLYING FOR A SCHOLARSHIP

Students may apply for scholarships each spring. The Eastern West Virginia Community Foundation, Hardy County Community Foundation, Hampshire County Community Foundation have a universal application form for all of scholarship funds. High school guidance counselors in the area are provided with application forms. Nontraditional and graduate students may have scholarship opportunities with us. Our applications forms may be downloaded at EWVCF.org.



Eastern West Virginia Community Foundation

229 East Martin Street, Suite 4
Martinsburg, WV 25401
(304) 264-0353
(888) 507-8375 toll-free fax
www.ewvcf.org · info@ewvcf.org
Serving Jefferson, Berkeley, and Morgan Counties



Hampshire County Community Foundation

PO Box 40
Romney, WV 26757
(304) 822-7200
(888) 507-8375 toll-free fax
www.hampshireccf.org · info@hampshireccf.org
Serving Hampshire County



Hardy County Community Foundation

PO Box 1058
Moorefield, WV 26836
(304) 538-3431
(888) 507-8375 toll-free fax
www.hardycountycf.org · info@hardycountycf.org
Serving Hardy County



EASTERN WEST VIRGINIA COMMUNITY FOUNDATION 2010 BOARD OF DIRECTORS

Stewart M. Borger, President • Diane Dailey, Immediate Past President
Mary Clare Eros, Vice President • Tia McMillan, Treasurer
Conrad C. Hammann, Secretary
Keith Berkeley • Jeff Boehm
Charles M. Brown • Walter Brown
Gat Caperton • Betsy Coffey
Gary Fleming • Jack Huyett
Henry Kayes • Jim Keel
Cindy Johnson • Taylor Perry
Roger Perry • Ruth Pritchard
Douglas M. Roach • Betty Russell
Tom Seely • RB Seem
Glen Stotler • Terry L. Walker
Tom Widder • Michael Whalton

HAMPSHIRE COUNTY COMMUNITY FOUNDATION 2010 BOARD OF DIRECTORS

Cindy Johnson, Chair • Bob Mayhew, Vice Chair
Bryan Steward, Secretary • Tom Campbell
Richard Hamblin • Jim Miller
Mark Puffinburger • Susan Rubenstein
Charlie See • Beth Wagner

HARDY COUNTY COMMUNITY FOUNDATION 2010 BOARD OF DIRECTORS

Tom Widder, Chair • Patrick Ford, Vice Chair
John Boothe, Secretary • Don Baker
Alan Brill • Lary Garrett
Jim Gilmore • Larry Kessel
Charles Maddy • Stanley Moyer

STAFF

Amy Owen, Executive Director • Amy Pancake, Affiliate Director
Felicia Fuller, Office Manager

TECHNICAL ADVISORS

George Alwin, AAMS • H. Charles Carl, III
Michael E. Caryl • Philip Cox, CPA (retired)
Leslie Crabill • David DeJarnett, LL.M
Fred Hollida, CPA • Marty Keesecker
Edward Slonaker • Larry A. Thornton, CTFA
Keith Unger, CTFA





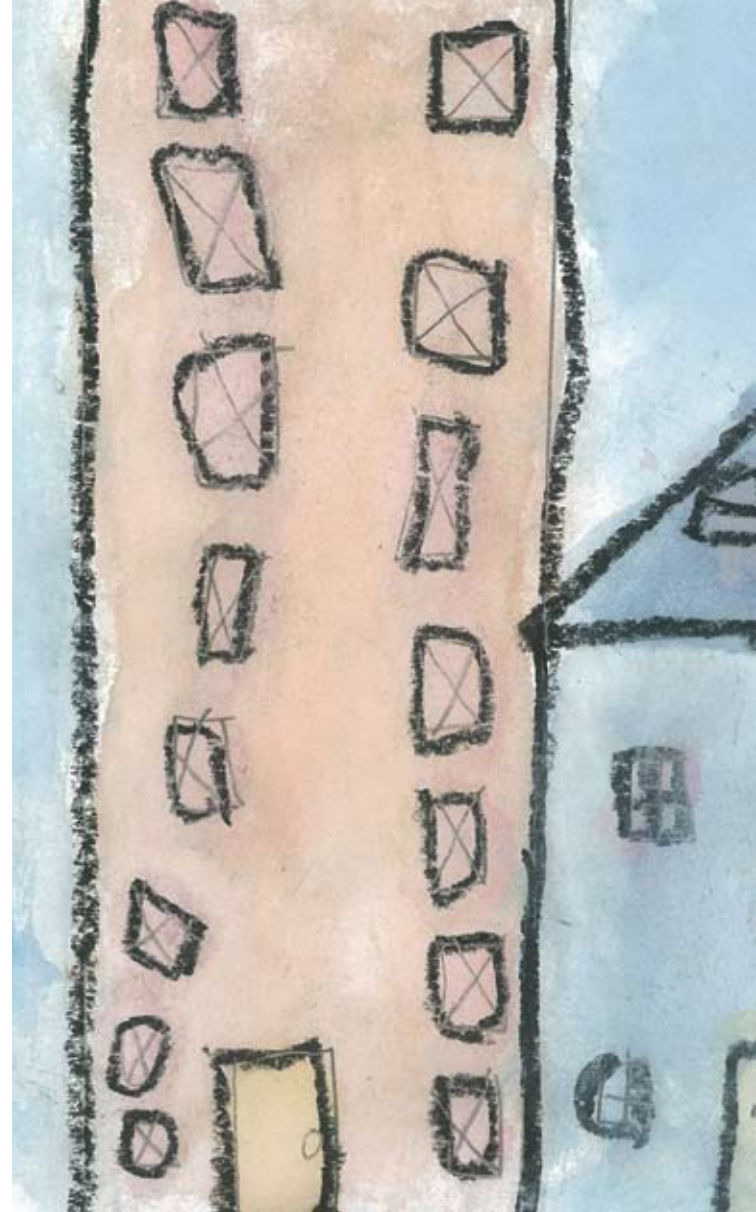
Polly Dillon died in 2004.

This year, she'll send her 11th freshman off to college.

Mary Coe "Polly" Dillon was a lifetime schoolteacher in Berkeley County. She is remembered by many of her students, today.

Thanks to Miss Dillon, her legacy endowment helps a new student further his or her journey toward higher education. That's the forever part of creating an endowment fund in your Community Foundation.

There is so much more we'd like you to know. Please call us today.



Eastern West Virginia Community Foundation

229 East Martin Street, Suite 4
Martinsburg, WV 25401
(304) 264-0353
(888) 507-8375 toll-free fax
www.ewvcf.org · info@ewvcf.org
Serving Jefferson, Berkeley, and Morgan Counties



Hampshire County Community Foundation

PO Box 40
Romney, WV 26757
(304) 822-7200
(888) 507-8375 toll-free fax
www.hampshireccf.org · info@hampshireccf.org
Serving Hampshire County



Hardy County Community Foundation

PO Box 1058
Moorefield, WV 26836
(304) 538-3431
(888) 507-8375 toll-free fax
www.hardycountycf.org · info@hardycountycf.org
Serving Hardy County